



# Using College Consortia to Elevate Your E&T Program

Jennifer Dellinger, Tanya Garbolino,  
Cathy Bio, and Camille Sun Vega

**OCTOBER 29-30, 2024 | TYSONS CORNER, VA**

# The Why

- ❑ The importance of college partnerships.
- ❑ The challenges of college partnerships.
- ❑ The value of the consortia model.

# The How

- ❑ Multiple models – nationally and within Western Region.
- ❑ WRO – Five separate models!
- ❑ TA Phases:
  - ❑ I: Three-day Forum in June 2024 for 15 states (Oregon)
  - ❑ II: National Forum (Washington, California, Hawaii, and Nevada)

# The Who

- ❑ **Washington: Jennifer Dellinger** - Policy Associate, Student Services, WA State Board for Community and Technical Colleges
- ❑ **California: Tanya Garbolino** - Director, Workforce Development, Foundation for California Community Colleges
- ❑ **Hawaii: Cathy Bio**, Director of Student Success, University of Hawaii Community College System
- ❑ **Nevada: Camille Sun Vega** - SNAP E&T Senior Coordinator, Nevada System of Higher Education

# The What

- |                        |            |                             |
|------------------------|------------|-----------------------------|
| ➤ Intro / Welcome      | Brian      | 5 Minutes                   |
| ➤ Panelist Intro       | J, T, C, C | 20 Minutes (5 minutes each) |
| ➤ Moderated Discussion | All        | 30-35 Minutes               |
| ➤ Audience Q&A         | All        | 15-20 Minutes               |



## Washington State Consortium

# WA State Board for Community & Technical Colleges (SBCTC)

- Nine-member governor appointed board
- Responsible for administering community and technical college act
- Provides leadership, advocacy, coordination, and direction for 34 community and technical colleges

## **Vision**

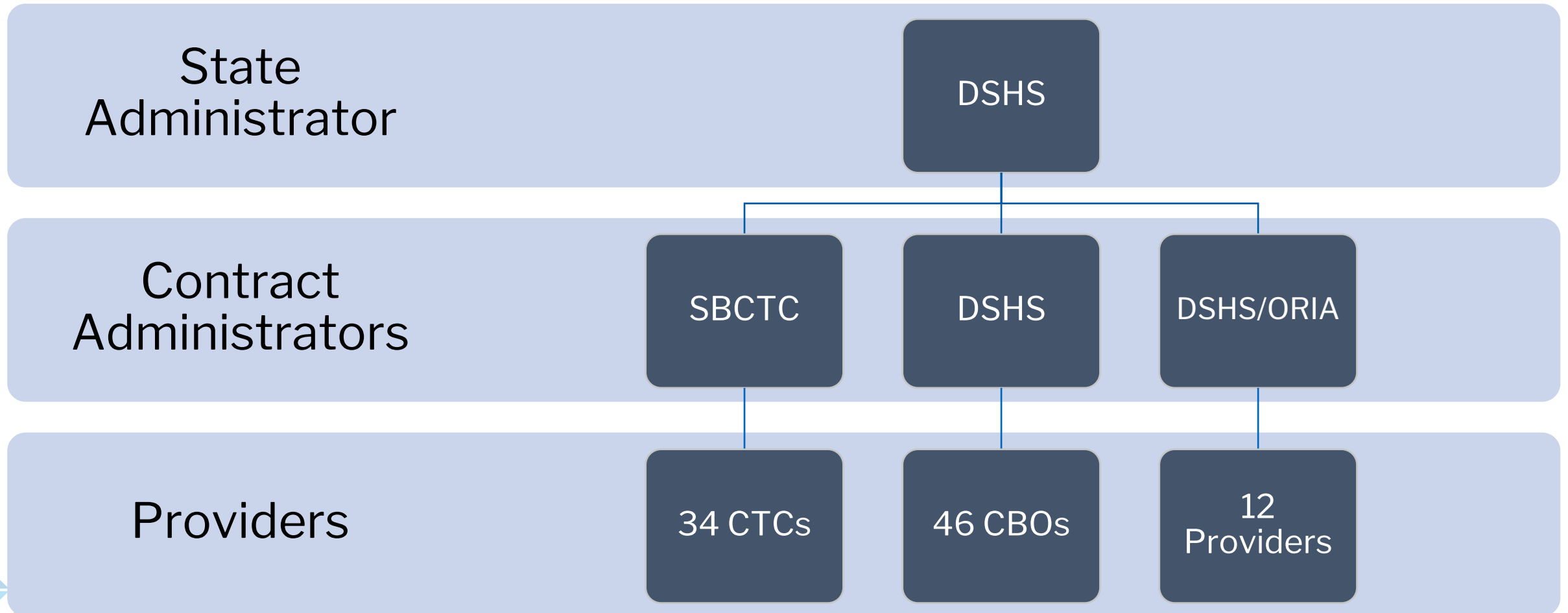
“Leading with racial equity, our colleges maximize student potential and transform lives within a culture of belonging that advances racial, social, and economic justice in service to our diverse communities.”

# About Me

- Policy Associate, Student Support Programs
  - Workforce Education and Student Services
- Program Oversight: TANF/WorkFirst, Basic Food Employment & Training, Benefits Navigators, Free/Reduced Price Meal Pilot Program
  - Program Integration Efforts
  - Emergency Assistance Grants, Homelessness and Former Foster Youth, Opportunity Grant, and Worker Retraining
- Policy Areas: Postsecondary Student Basic Needs, Poverty Reduction, Childcare, Economic Security, and Equitable Access



# SNAP E&T in Washington



# WA Colleges BFET History



2005

## Basic Food Employment and Training (BFET)

Pilot program that began in October 2005 in King County. Four CBOs and one community college partook in the pilot



2009

## SBCTC

SBCTC umbrella contracts with DSHS



2013

## CTC Implementation

State-wide CTC implementation. All 33 colleges participate in BFET

# SBCTC Administration Role - BFET

## Contract Management

- Negotiate and execute contract
- BFET 100% and 50/50

## Grant Management

- Grant Guidelines
- Funding Surveys

## Fiscal Management

- Monthly Billing
- Fiscal Guidelines

## Compliance

- Monitoring Visits (annual)
- CAP development and follow-up

## Program Policy

- Policy development & clarification
- Advocacy for CTCs

# Contact Information

Jennifer Dellinger, Policy Associate, SBCTC

[jennndellinger@sbctc.edu](mailto:jennndellinger@sbctc.edu)

360.704.4339

Sheila Acosta, Program Administrator, SBCTC

[sacosta@sbctc.edu](mailto:sacosta@sbctc.edu)

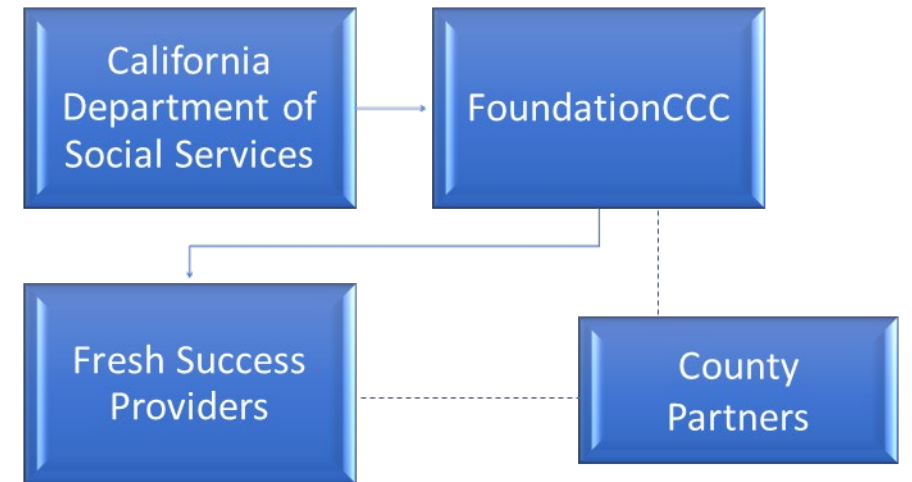
360.704.3529



California State Consortium

# California's Fresh Success Program

- Foundation for California Community Colleges acts as statewide intermediary
- California has
  - 58 counties; 35 participate in E&T
  - 116 community colleges
- FoundationCCC program known as Fresh Success
  - Started with pilots in 2016



# California's Fresh Success Program (2)

- Our role: Recruit, onboard, support, and monitor third-party providers at community colleges, adult schools, and non-profit organizations
- Funded by hold-back fee and grants
- Currently partnering with
  - 18 counties
  - 21 community colleges
  - 12 non-profits
  - 1 K-12 adult school

# Contact Information

Tanya Garbolino

[www.foundationccc.org/freshsuccess](http://www.foundationccc.org/freshsuccess)

Email: [freshsuccess@foundationccc.org](mailto:freshsuccess@foundationccc.org)



QR: [www.foundationccc.org/freshsuccess](http://www.foundationccc.org/freshsuccess)





## Hawaii State Consortium

# HINET

## Workforce and Education Training Program

University of  
Hawaii  
Community  
Colleges

State of Hawaii  
Department of  
Human Services

### **Interagency collaboration**

designed to improve college access for  
Hawaii SNAP recipients while accelerating  
them through a college career pathway

# Program Structure

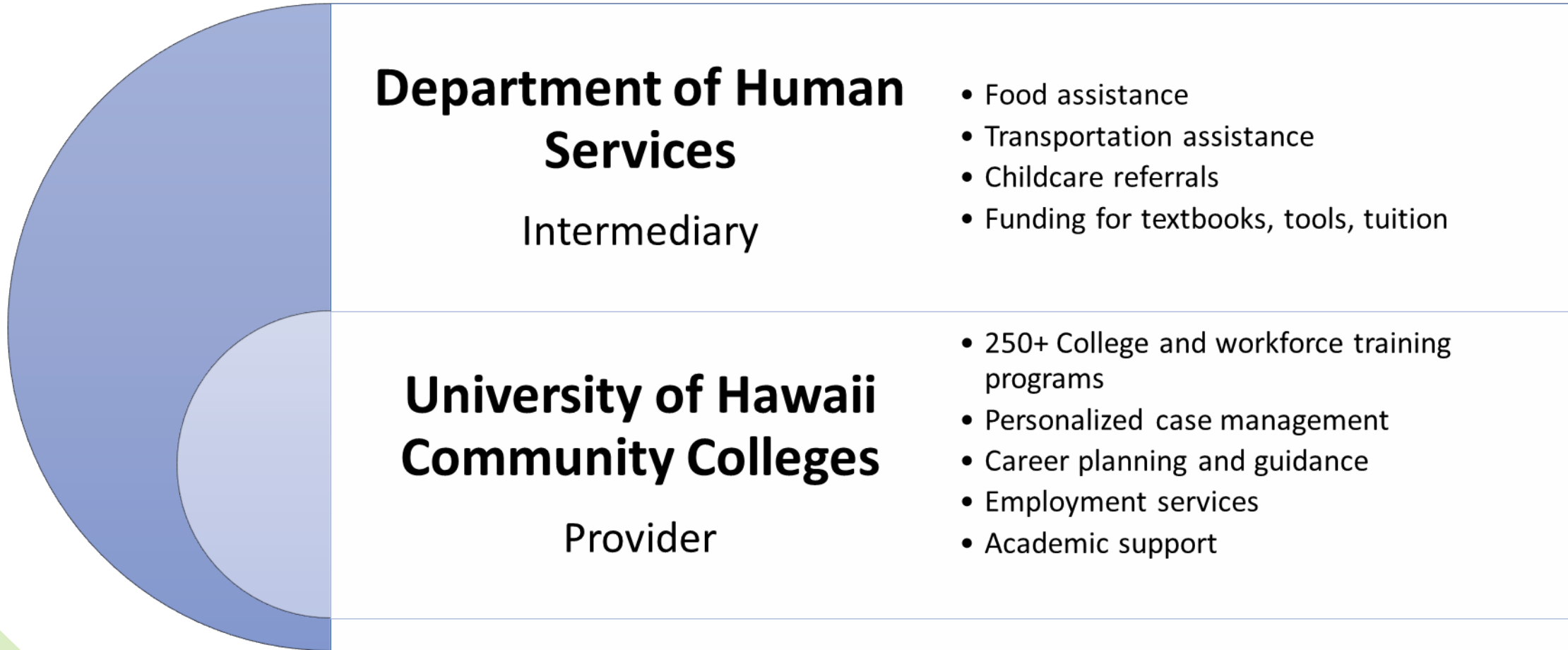
## Department of Human Services - Intermediary

- Contracts & Grants, Fiscal Management and Compliance

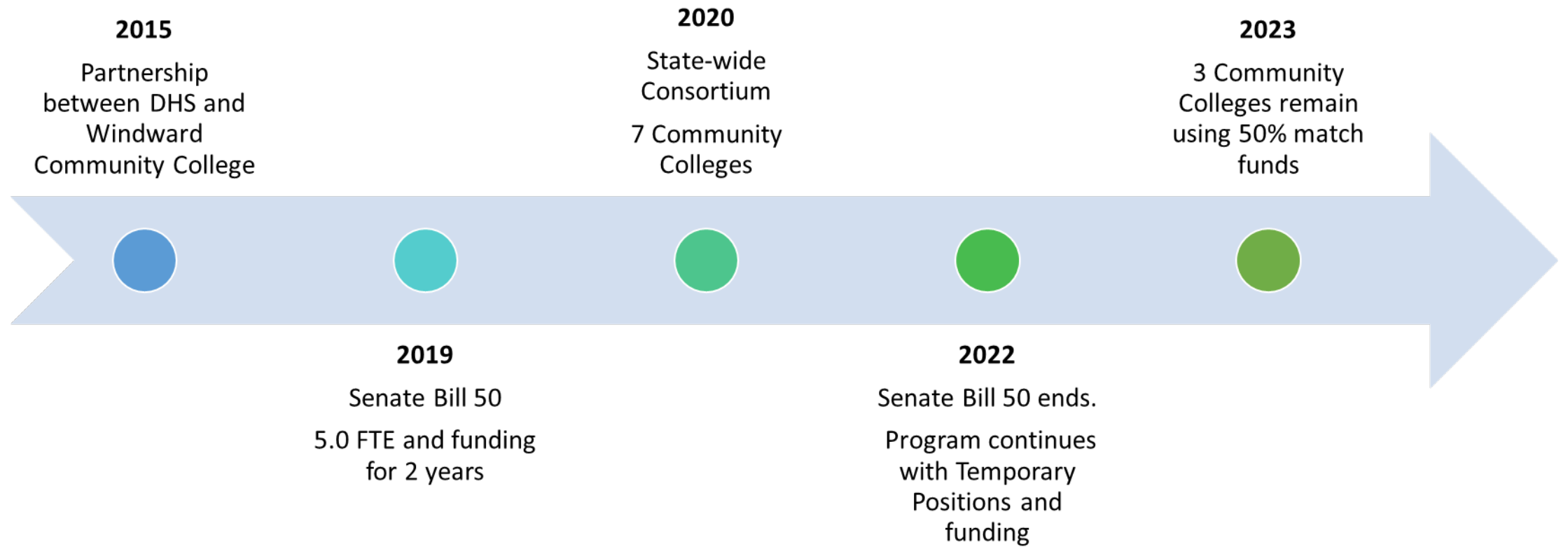
## UH Community Colleges - Provider

- UHCC System Office – Coordination and Facilitation
- Campus Coordinators – Direct Service and Monitoring

# Support for Students



# HINET Progression



# Contact Information

Cathy Bio, Director of Student Success, UHCC

[cbio@hawaii.edu](mailto:cbio@hawaii.edu)

808.984.3614



Nevada State Consortium

# Nevada System of Higher Education (NSHE)

- Comprised of two R1, doctoral-granting universities (UNR and UNLV), a state university (NSU) four community colleges (CSN, GBC, TMCC and WNC), and an environmental research institute (DRI).
- NSHE connects all public, higher education institutions in Nevada to allow schools and students a consistent program for the entire state.
- NSHE carries out state-wide initiatives providing support and guidance to ensure students have access to programs that fit their needs where they live.
- NSHE provides opportunities to more than 106,000 students.



# Where It All Began

- Started at TMCC in Student Services/Counseling and DRC.
- Experience in developing programs on federal grants to increase help seeking behaviors and linking students to community, state and federal supports.
- Shifted to working with students with barriers to education and employment.
  - Started program for justice impacted students and individuals returning to work after long breaks in employment.
  - SNAP E&T started in 2018. First school in the state to launch a program.
  - 2021 moved to NSHE office to assist other schools to develop SNAP E&T programs.
  - October 1 all NV community colleges has a contract with DWSS.
  - UNLV is piloting a program as a university.

# NSHE's Role

- Assist in development of budget.
- Assistance in program development
  - Identify population
  - Processes
  - RFR
- Training of staff and verification of accuracy
- Maintain shared tracking database
- Advocacy to shared definition of allowable supports
- One person to work with
  - Transition at schools
  - Training
  - Information sharing
- Consistent program for all schools
- Understanding the college processes.
- Understand college programs
- Central location for data and tracking

# Contact Information



Camille Sun Vega  
Senior SNAP E&T Coordinator  
[cvega@nshe.nevada.edu](mailto:cvega@nshe.nevada.edu)



# Panel Discussion



## Audience Q and A

# Contacts

Brian Solomon, FNS Western  
Region SNAP E&T Senior  
Analyst

Brian.Solomon@USDA.Gov

Jennifer Dellinger - WA

Tanya Garbolino - CA

Cathy Bio - HI

Camille Sun Vega - NV



# We want to hear from you!

Provide feedback on this session by scanning the QR code and filling out the survey



QR: <https://www.surveymonkey.com/r/F6HFLHH>