



The E&T Data Lifecycle: What is It and Lessons Learned

Loretta Robertson

Elizabeth Brown

SNAP E&T Data Lifecycle



Agricultural Act of 2014

Section 16(h)(5) Monitoring of E&T programs

- Charged FNS with responsibility to assess **effectiveness of State's E&T programs**
- Reporting measures that **identify improvement in skills, training, education or work experience of SNAP participants**
 - National measures aligned with Federal workforce programs
 - State component measures intended to serve 100 participants/yr
- Principles for FNS Oversight of E&T Activities
- Required Annual Report submission
- FNS authority to require modifications to E&T State Plan for inadequate outcomes (i.e. effectiveness of E&T programs)
- Best Practices Study every 5 years



FNS Oversight of E&T Activities

- Compliance with Regulations
- **Program activities appropriate** to meet needs of individuals referred to E&T
- Appropriate reporting measures **to identify improvement** in skills, training, education or work experience
- Compliance with ABAWD Pledge – additional reporting measures

Why is FNS collecting this data?

- Congress and Administration Intent - for effective E&T programs that provide appropriate activities that meets participants' needs and results in improving skills necessary for employment and increasing the number who obtain and retain employment.
- Looking at the data through the lifecycle provides the Big Picture of an E&T program.

Two projects focused on SNAP E&T data

- SNAP Data Driven Improvement: Prepare Summary Documents of State Data (“Little Data project”)
- Assessment of SNAP E&T Data Reporting

SNAP E&T State plan



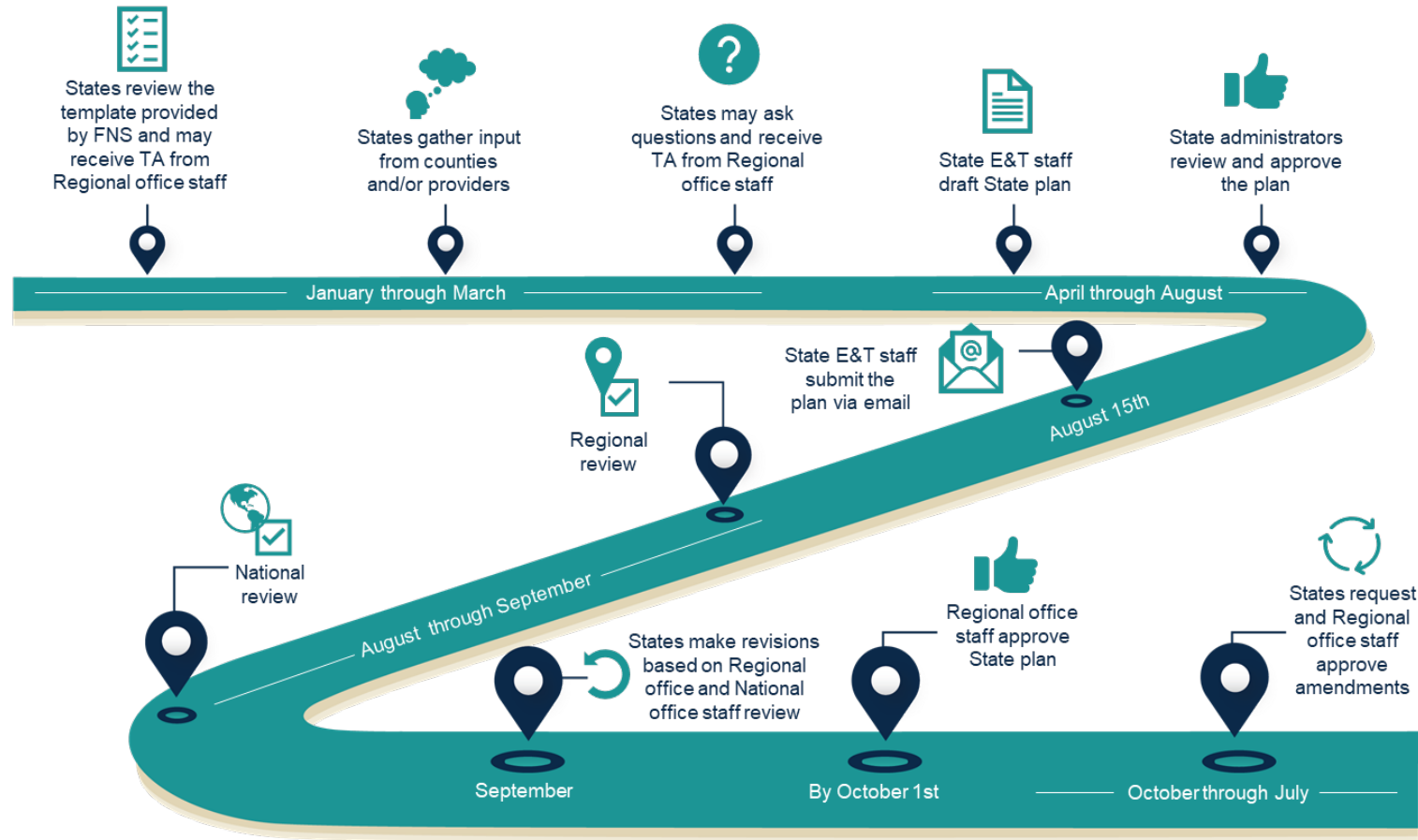
State plan

- State plans describe the services and activities States will offer for the upcoming fiscal year
- States approach developing the State plan in different ways, including the number and type of staff involved
- State plans set the foundation for understanding E&T programs



States reported that providing clear guidance to counties and providers on the information needed for the State plan made the process go smoother. States included information they would need in county plan templates, RFAs, and contracts.

State plan process map



Reviewing State plans: What we look for

- Background information on the project (such as type of program, target population, and geographic service areas)
- Program changes
- Provider type
- Components (including description, level of effort, providers offering the component, target population, State component reporting measure)

Reviewing State plans: Persistent issues

- Information does not change year to year
- Sections of the plan are internally inconsistent
- The State plan does not provide enough detail to understand the components offered and anticipated number of participants in those components

FNS-583 form data

FNS-583 form data

- States report on E&T program implementation
- FNS-583 form data provide a count of the number of work registrants and E&T participants served by the States
- States typically use a combination of data from the SNAP eligibility MIS, E&T MIS, or Excel spreadsheets from providers to produce their FNS-583 forms



States have developed crosswalks for counties and providers to assist with coding components. This helps to ensure consistency across providers and more accurate reporting on the FNS-583 form.

FNS-583 form data process map



Reviewing FNS-583 form data: What we look for

- Work registrant, ABAWD, and E&T participant levels compared to previous years and State plan estimates
- Reported components compared to State plan

Reviewing FNS-583 form data: Persistent issues

- Inconsistencies between the reported number of participants and number of participants in components
- State uses the 'other' categories for components that should be reported as a standard component
- Components reported on the FNS-583 do not match the State plan

Annual report

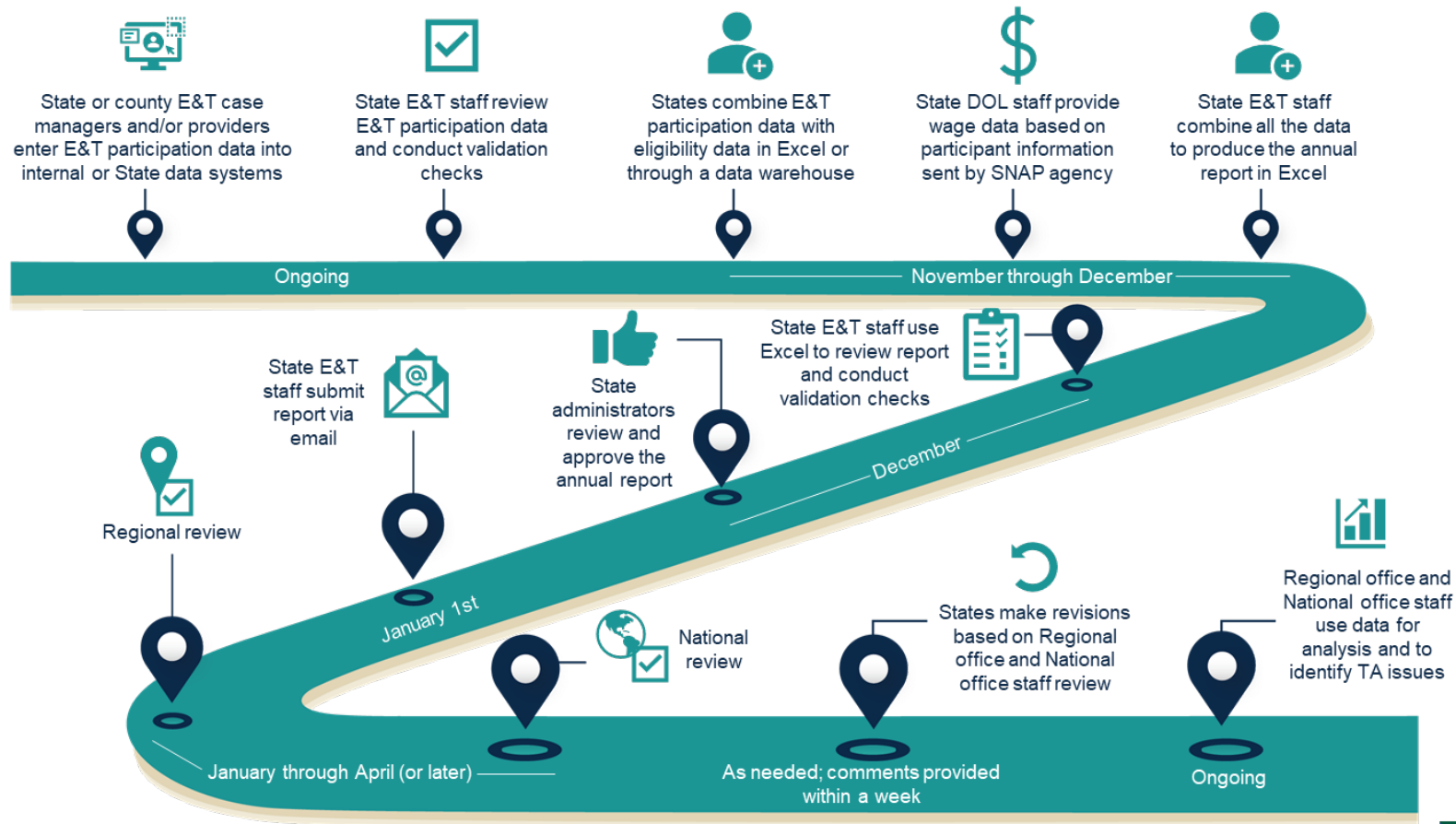
Annual report

- The annual report provides outcome data on E&T participants, including information on the percentage who were employed 6 and 12 months after completion and participant characteristics
- States reported that multiple staff are typically involved in compiling the annual report



Some States have standardized the annual report process, including developing agreements with the agency providing UI wage data to exchange data automatically each year and to integrate those and other data sources into standard templates to automatically produce the information needed for the reports.

Annual report process map



Reviewing annual reports: What we look for

- Reporting time period for the National Reporting Measures is documented
- National Reporting Measure on completion includes the appropriate components compared to the FNS-583 data
- Participant characteristics of total number of participants and percentage mandatory/voluntary compared to the FNS-583 and State plan
- State component reporting measures align with components listed in State plan, and are outcome (not process) measures for the current fiscal year



Reviewing annual reports: Persistent issues

- Reporting time periods for the National Reporting Measures are incomplete or inaccurate
 - Often missing four quarters of data or gap in cohort from last report
- Number of participants in the annual report does not match the FNS-583
- State component reporting measures are process measures, are different from those approved in the State plan, or are not for the current fiscal year

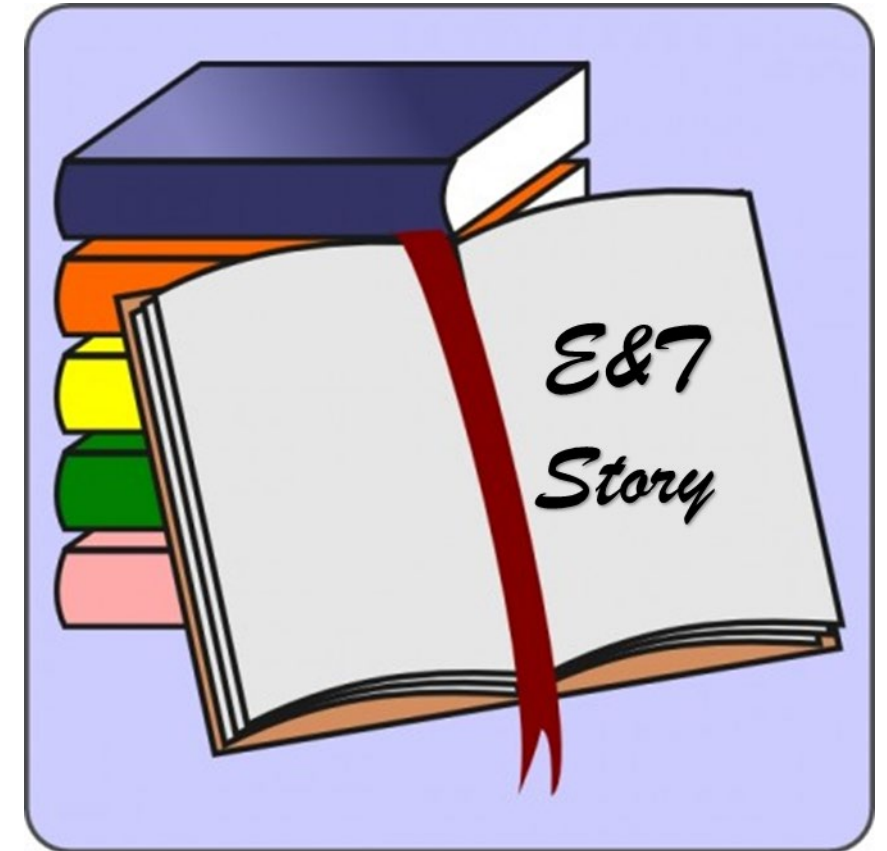
The data tell the States' stories

- The three data sources build upon and feed into each other to tell the story of E&T during the fiscal year
- The State plan provides the blueprint of the program, the FNS-583 describes how participants engaged with the program, and the annual report shows the outcomes of those participants
- It is essential that the story told by the three data sources is consistent and that this is considered when producing them

E&T data uses

E&T data uses

- Program Funding
 - Initial 100 percent Allocations
 - Can support requests for additional funds
- Program development and support
- Agency reporting – Administration and Congress
- Responding to requests from the public



Questions?

