

National findings from the **2023** FARM^{to}SCHOOL CENSUS

Farm to School Activities and Outcomes

Farm to school participation increased from 2019 to 2023

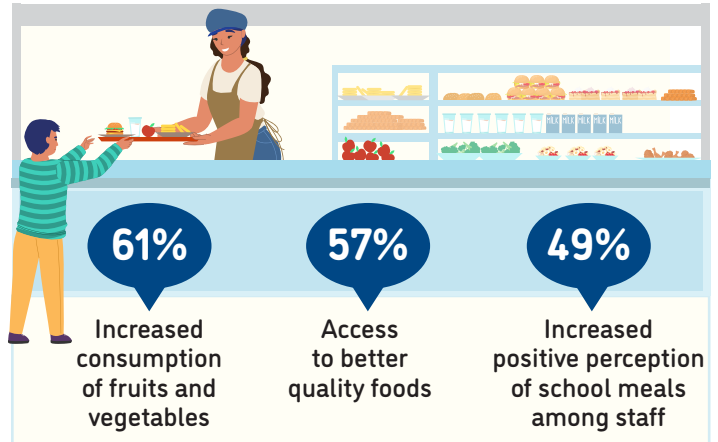
2019 **65%** of SFAs did at least one farm to school activity

2023 **74%**

These SFAs included **86,086** schools and **45,661,333** students



Positive outcomes of SFAs from farm to school participation



Farm to school activity participation among SFAs



9% of all schools had an edible school garden



Total of **9,112** edible school gardens

74% of all schools served local food

81% of SFAs participating in farm to school served local foods at least weekly



Local items that SFAs spent the most on



For more information on the Farm to School Census, visit: <https://farmtoschoolcensus.fns.usda.gov/>

Farm to School Environment

In total, SFAs spent

\$1.8 billion

on all local food

\$955 million

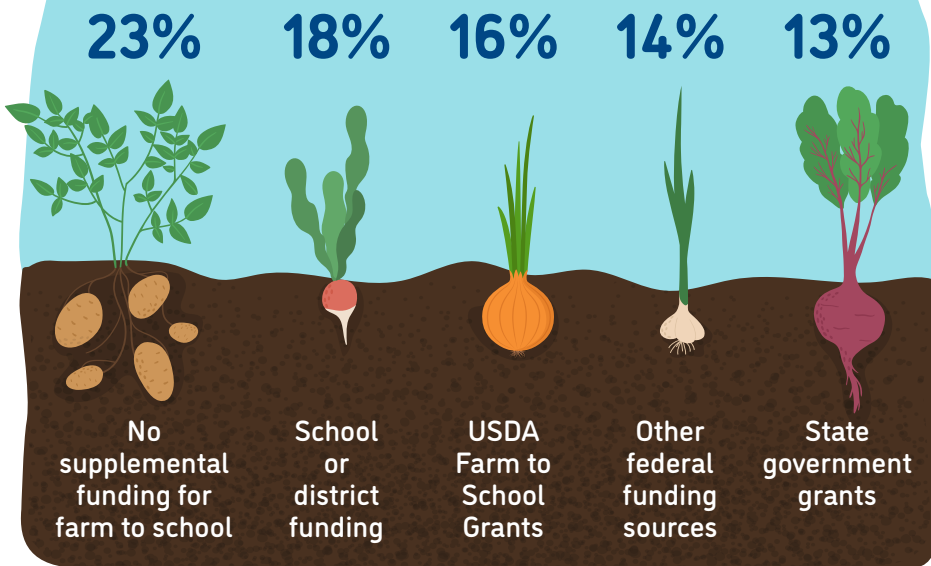
on local fluid milk alone

Among SFAs doing farm to school, 16% of their spending was on local foods

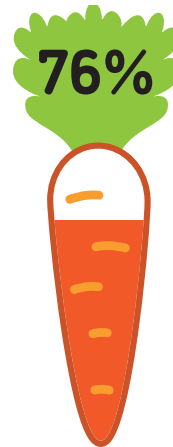
Challenges farm to school SFAs faced when procuring local foods



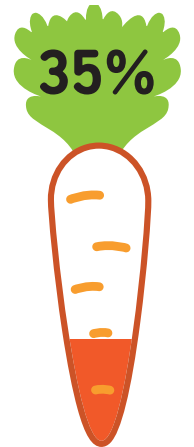
How SFAs fund farm to school



Farm to school SFAs with at least one staff member who used some of their time for farm to school



Farm to school SFAs with at least one full-time staff member dedicated to farm to school



Road Ahead

SFAs that don't participate in farm to school would like

43%



More funding for SFAs in general

42%



Training/technical assistance on finding local foods

36%



Training/technical assistance on procurement and delivery processes for local foods