

Washington findings from the

Farm to School Activities and Outcomes

Farm to school participation in Washington

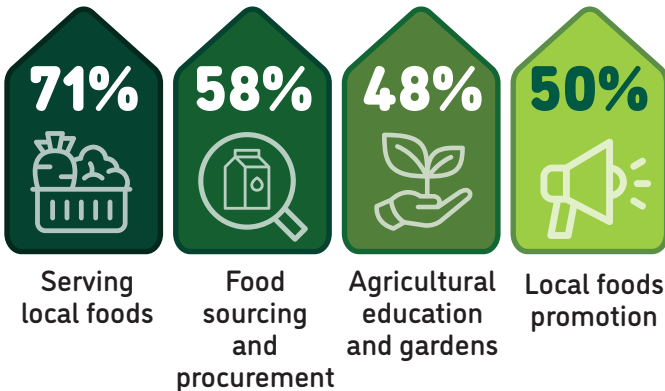
Washington **78%** of SFAs did at least one farm to school activity

Nationally **74%**

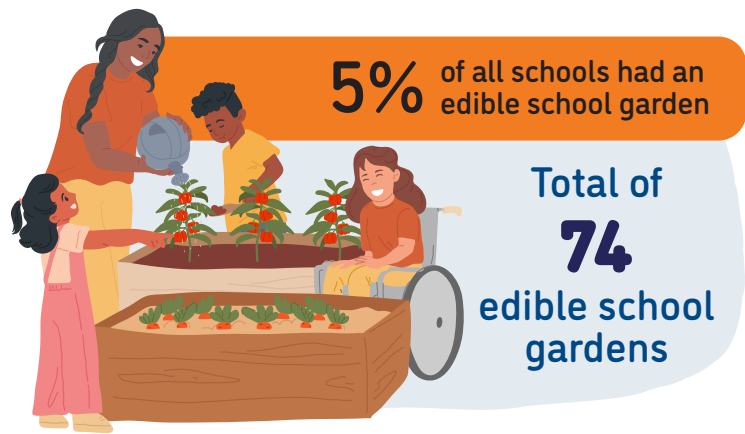
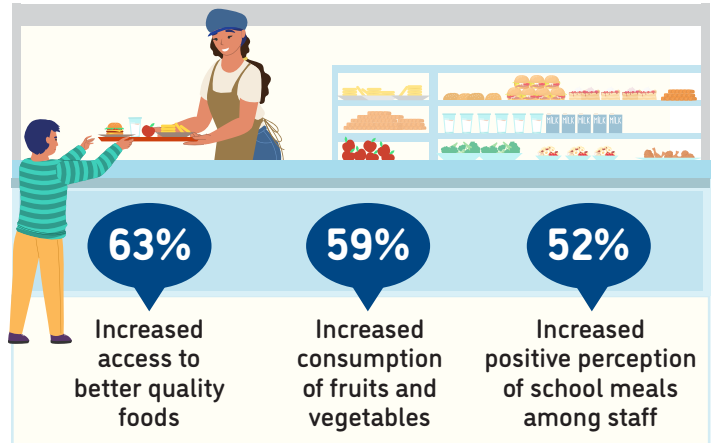
These SFAs included **1,325** schools and **671,613** students



Farm to school activity participation among SFAs



Positive outcomes of SFAs from farm to school participation



76% of all schools served local food

88% of SFAs participating in farm to school served local foods at least weekly



Local items that SFAs spent the most on



For more information on the Farm to School Census, visit: <https://farmtoschoolcensus.fns.usda.gov/>

Washington Farm to School Environment

In total, SFAs spent

\$31 million

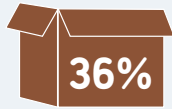
on all local food

\$15 million

on local fluid milk alone

Among SFAs doing farm to school, 18% of their spending was on local foods

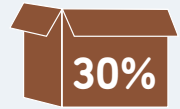
Challenges farm to school SFAs faced when procuring local foods



Local foods are more expensive



Limited availability of local foods



Lack of staff time to prepare local foods



How SFAs fund farm to school

28%

21%

21%

6%

18%



Farm to school SFAs with at least one full or part-time staff who used some of their time for farm to school

77%



Farm to school SFAs with at least one full-time staff dedicated to farm to school

32%



Road Ahead

SFAs that don't participate in farm to school would like

57%



Targeted funding for farm to school educational activities

43%



Targeted funding to improve kitchen capacity

43%



Training/technical assistance on procurement and delivery processes for local foods