

U.S. Virgin Islands findings from the

Farm to School Activities and Outcomes

Farm to school participation in the U.S. Virgin Islands

U.S. Virgin Islands **100%** of SFAs did at least one farm to school activity

Nationally **74%**

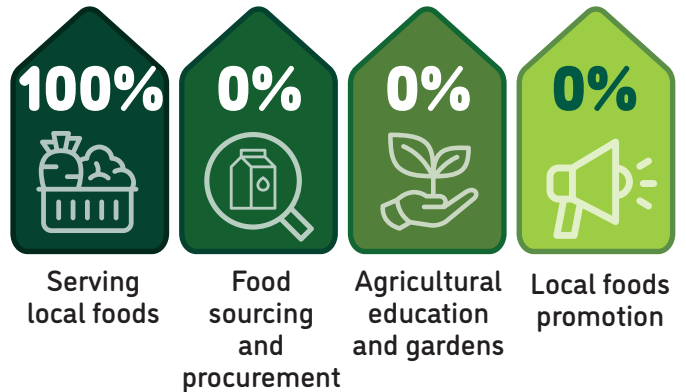
These SFAs included **21** schools and **6,421** students



Positive outcomes of SFAs from farm to school participation



Farm to school activity participation among SFAs



100% of all schools served local food



Local items that SFAs spent the most on



For more information on the Farm to School Census, visit: <https://farmtoschoolcensus.fns.usda.gov/>

U.S. Virgin Islands Farm to School Environment

In total, SFAs spent

\$200 thousand

on all local food

\$0

on local fluid milk alone

Among SFAs doing farm to school, 12% of their spending was on local foods

Challenges farm to school SFAs faced when procuring local foods



Limited availability of local foods



Local food vendors don't offer a broad range of products



Local foods are more expensive



How SFAs fund farm to school

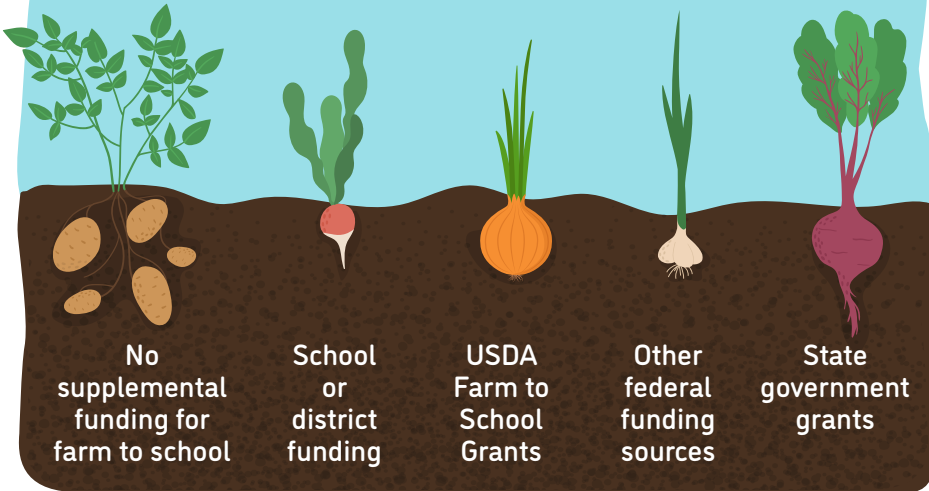
0%

100%

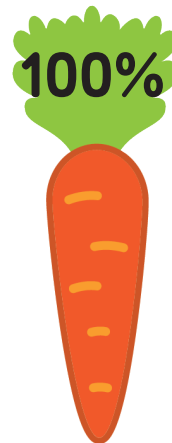
100%

0%

0%



Farm to school SFAs with at least one full or part-time staff who used some of their time for farm to school



Farm to school SFAs with at least one full-time staff dedicated to farm to school

