

# Virginia findings from the

## Farm to School Activities and Outcomes

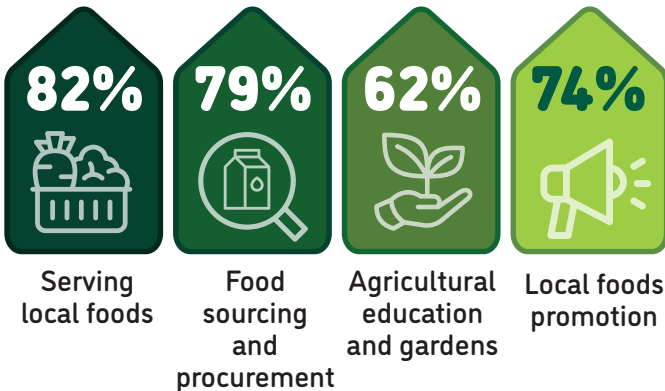
### Farm to school participation in Virginia

Virginia **89%** of SFAs **74%** Nationally did at least one farm to school activity

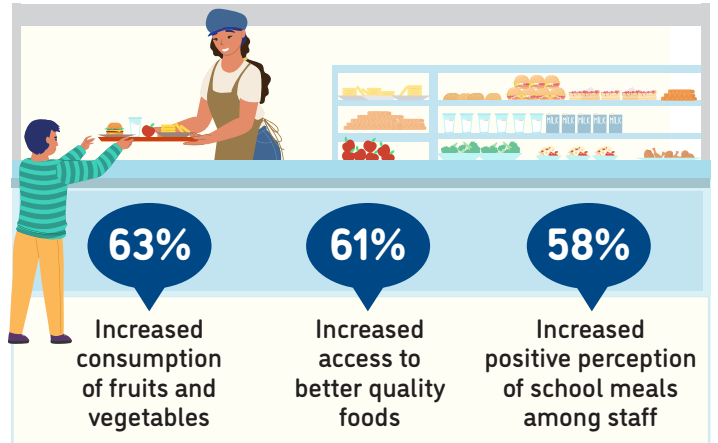
These SFAs included **1,828** schools and **1,207,476** students



### Farm to school activity participation among SFAs



### Positive outcomes of SFAs from farm to school participation



**11%** of all schools had an edible school garden



Total of **210** edible school gardens

**94%** of all schools served local food

**83%** of SFAs participating in farm to school served local foods at least weekly



### Local items that SFAs spent the most on



For more information on the Farm to School Census, visit: <https://farmtoschoolcensus.fns.usda.gov/>

# Virginia Farm to School Environment

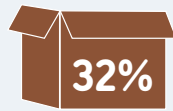
In total, SFAs spent

**\$46 million**  
on all local food

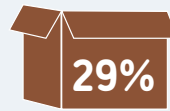
**\$30 million**  
on local fluid milk alone

Among SFAs doing farm to school, 14% of their spending was on local foods

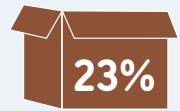
## Challenges farm to school SFAs faced when procuring local foods



Local foods are more expensive



Limited availability of local foods



Difficult to find local vendors



## How SFAs fund farm to school

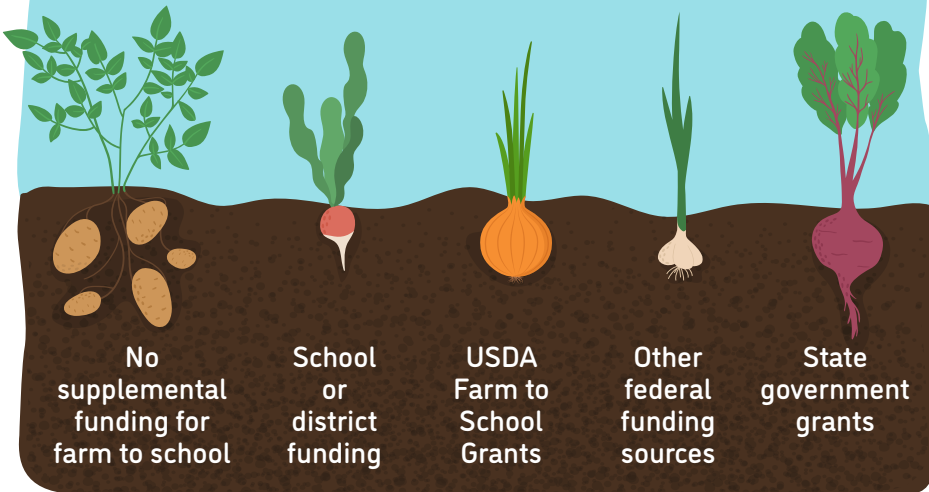
41%

16%

6%

11%

12%



Farm to school SFAs with at least one full or part-time staff who used some of their time for farm to school

79%



Farm to school SFAs with at least one full-time staff dedicated to farm to school

21%



## Road Ahead

SFAs that don't participate in farm to school would like

39%



Training/technical assistance on finding local foods

39%



Training/technical assistance on paying for local foods or farm to school activities

38%



Training/technical assistance on preparing local foods