

Vermont findings from the

Farm to School Activities and Outcomes

Farm to school participation in Vermont

Vermont **96%** of SFAs did at least one farm to school activity

Nationally **74%**

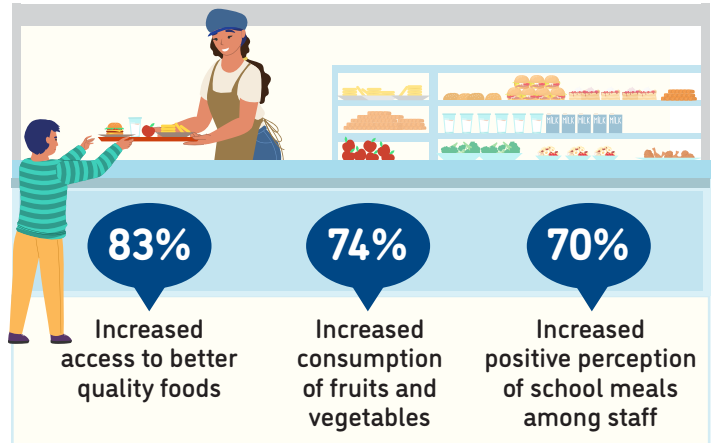
These SFAs included **224** schools and **50,590** students



Farm to school activity participation among SFAs



Positive outcomes of SFAs from farm to school participation



39% of all schools had an edible school garden



Total of **92** edible school gardens

79% of all schools served local food

87% of SFAs participating in farm to school served local foods at least weekly



Local items that SFAs spent the most on



For more information on the Farm to School Census, visit: <https://farmtoschoolcensus.fns.usda.gov/>

Vermont Farm to School Environment

In total, SFAs spent

\$3 million

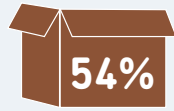
on all local food

\$886 thousand

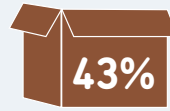
on local fluid milk alone

Among SFAs doing farm to school, 15% of their spending was on local foods

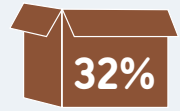
Challenges farm to school SFAs faced when procuring local foods



Local foods are more expensive



Limited availability of local foods



Local food vendors don't offer a broad range of products



How SFAs fund farm to school

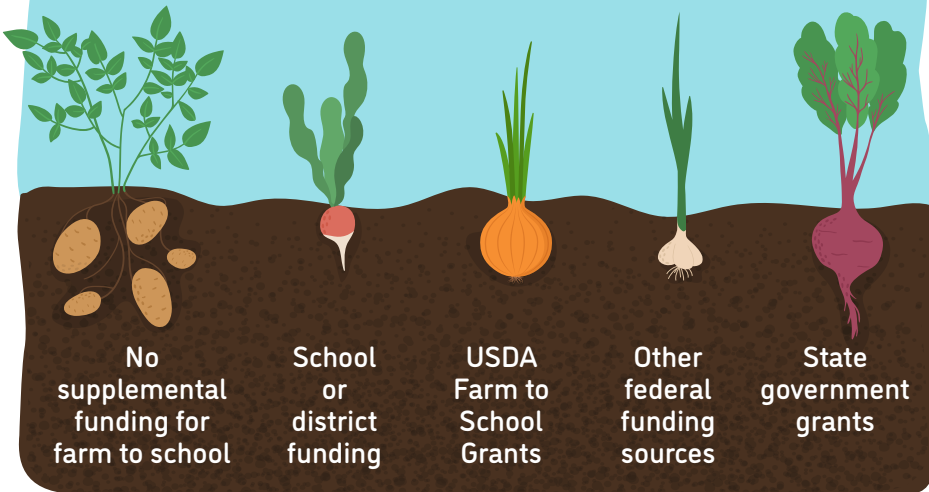
11%

34%

28%

30%

21%



Farm to school SFAs with at least one full or part-time staff who used some of their time for farm to school

92%



Farm to school SFAs with at least one full-time staff dedicated to farm to school

30%

