

South Dakota findings from the

Farm to School Activities and Outcomes

Farm to school participation in South Dakota

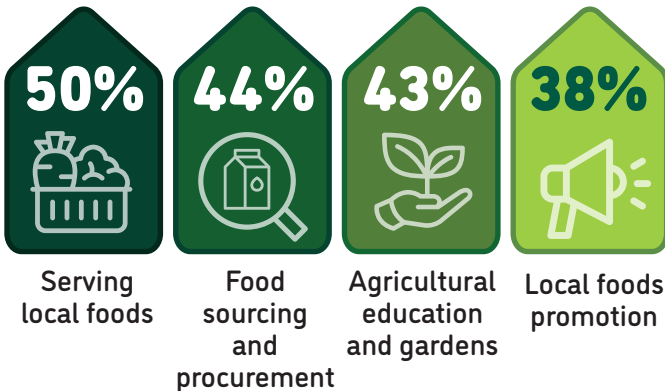
South Dakota **60%** of SFAs did at least one farm to school activity

Nationally **74%**

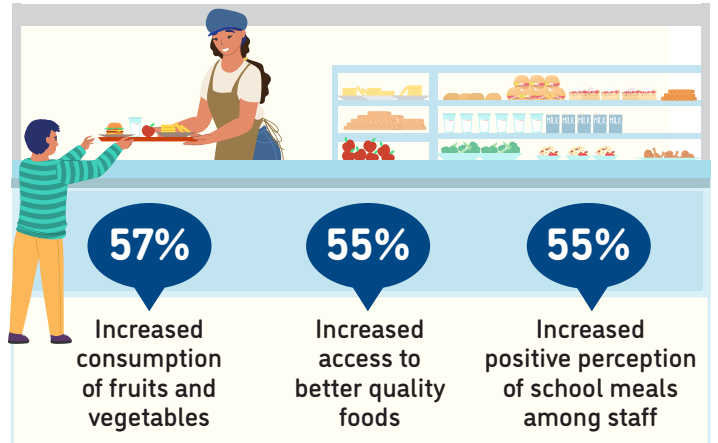
These SFAs included **268** schools and **64,964** students



Farm to school activity participation among SFAs



Positive outcomes of SFAs from farm to school participation



4% of all schools had an edible school garden



Total of **17** edible school gardens

44% of all schools served local food

61% of SFAs participating in farm to school served local foods at least weekly



Local items that SFAs spent the most on



For more information on the Farm to School Census, visit: <https://farmtoschoolcensus.fns.usda.gov/>

South Dakota Farm to School Environment

In total, SFAs spent

\$2 million

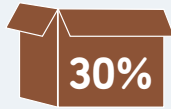
on all local food

\$953 thousand

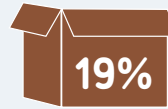
on local fluid milk alone

Among SFAs doing farm to school, 11% of their spending was on local foods

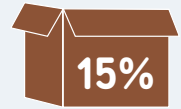
Challenges farm to school SFAs faced when procuring local foods



Limited availability of local foods



Local foods are more expensive



Difficult to find local vendors



How SFAs fund farm to school

22%

22%

10%

4%

10%



No supplemental funding for farm to school

School or district funding

USDA Farm to School Grants

Other federal funding sources

State government grants

Farm to school SFAs with at least one full or part-time staff who used some of their time for farm to school

80%



Farm to school SFAs with at least one full-time staff dedicated to farm to school

43%



Road Ahead

SFAs that don't participate in farm to school would like

50%



More funding for SFAs in general

50%



Training/technical assistance on finding local foods

43%



Changes to procurement policies