

Puerto Rico findings from the

Farm to School Activities and Outcomes

Farm to school participation in Puerto Rico

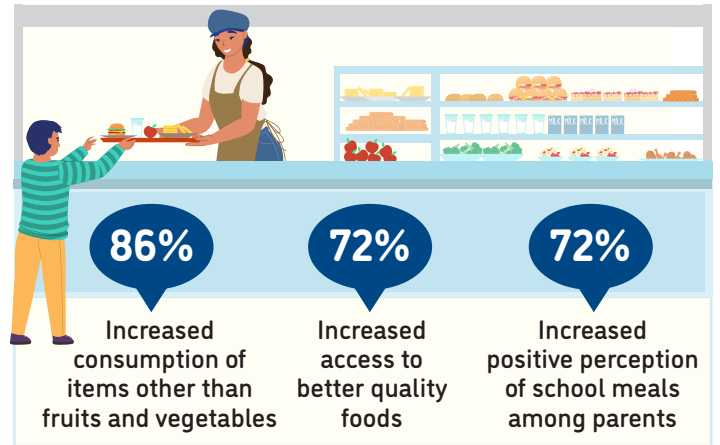
Puerto Rico **100%** of SFAs did at least one farm to school activity

Nationally **74%**

These SFAs included **859** schools



Positive outcomes of SFAs from farm to school participation



Farm to school activity participation among SFAs



100% of all schools served local food

100% of SFAs participating in farm to school served local foods at least weekly



Local items that SFAs spent the most on



For more information on the Farm to School Census, visit: <https://farmtoschoolcensus.fns.usda.gov/>

Puerto Rico Farm to School Environment

In total, SFAs spent

\$2 million

on all local food

\$743 thousand

on local fluid milk alone

Among SFAs doing farm to school, 32% of their spending was on local foods

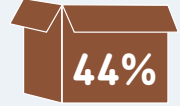
Challenges farm to school SFAs faced when procuring local foods



Limited availability of local foods



Local foods are more expensive



Unstable product prices



How SFAs fund farm to school

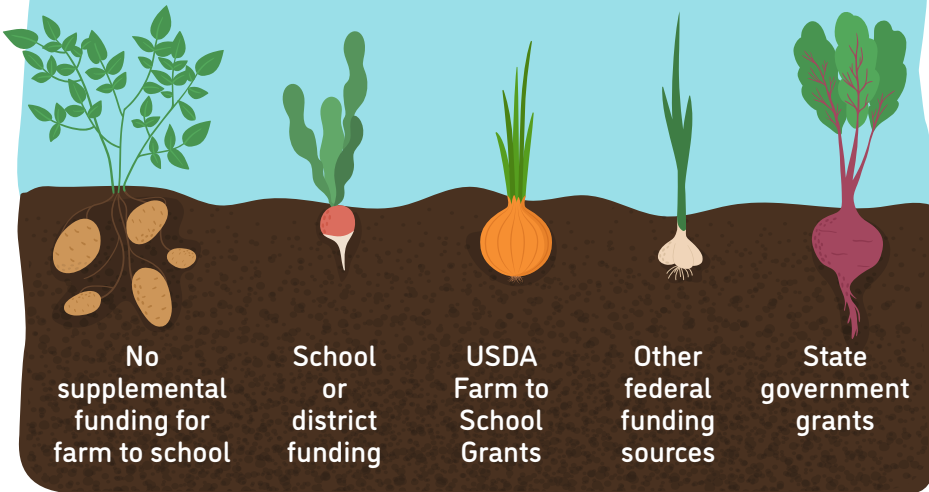
17%

0%

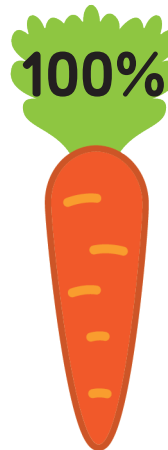
14%

28%

14%



Farm to school SFAs with at least one full or part-time staff who used some of their time for farm to school



Farm to school SFAs with at least one full-time staff dedicated to farm to school

