

Oregon findings from the

Farm to School Activities and Outcomes

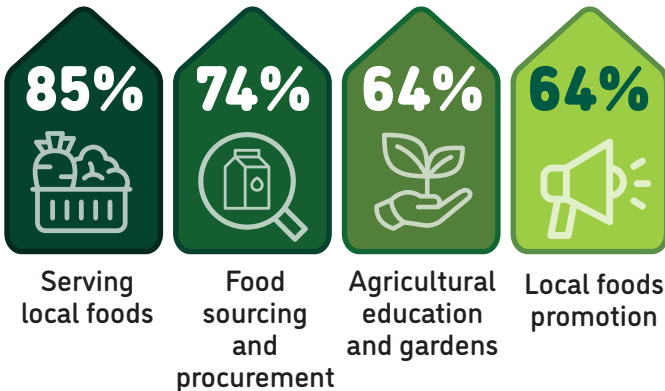
Farm to school participation in Oregon

Oregon **90%** of SFAs **74%** Nationally did at least one farm to school activity

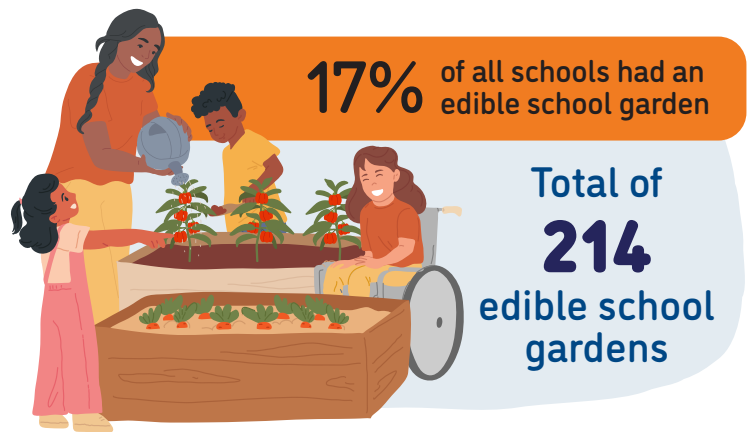
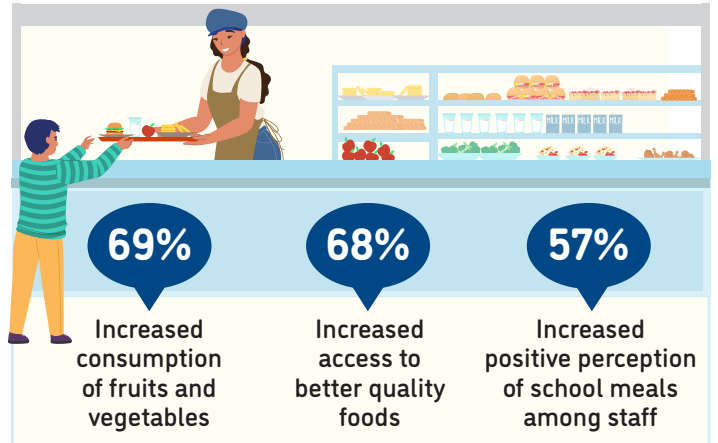
These SFAs included **1,163** schools and **484,340** students



Farm to school activity participation among SFAs



Positive outcomes of SFAs from farm to school participation



86% of all schools served local food

82% of SFAs participating in farm to school served local foods at least weekly



Local items that SFAs spent the most on



For more information on the Farm to School Census, visit: <https://farmtoschoolcensus.fns.usda.gov/>

Oregon Farm to School Environment

In total, SFAs spent

\$22 million

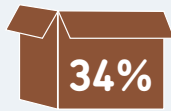
on all local food

\$11 million

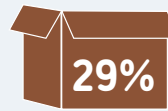
on local fluid milk alone

Among SFAs doing farm to school, 19% of their spending was on local foods

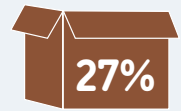
Challenges farm to school SFAs faced when procuring local foods



Limited availability of local foods



Local foods are more expensive



Delivery challenges



How SFAs fund farm to school

12%

29%

57%

20%

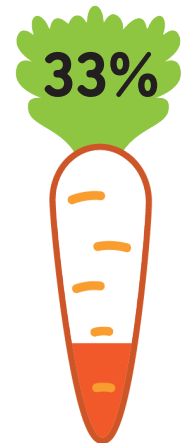
27%



Farm to school SFAs with at least one full or part-time staff who used some of their time for farm to school



Farm to school SFAs with at least one full-time staff dedicated to farm to school



Road Ahead

SFAs that don't participate in farm to school would like

30%



Training/technical assistance on procurement and delivery processes for local foods

30%



Training/technical assistance on paying for local foods or farm to school activities

30%



Training/technical assistance on preparing local foods