

# Ohio findings from the

## Farm to School Activities and Outcomes

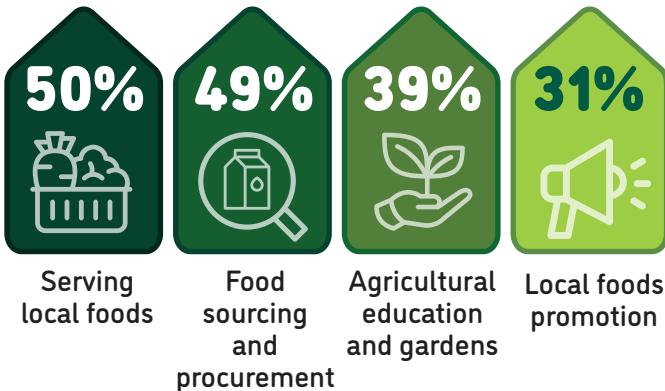
### Farm to school participation in Ohio

Ohio **66%** of SFAs **74%** Nationally did at least one farm to school activity

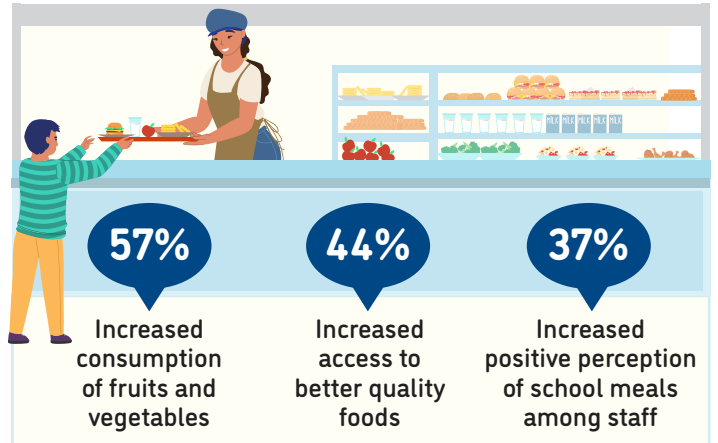
These SFAs included **2,039** schools and **1,348,277** students



### Farm to school activity participation among SFAs



### Positive outcomes of SFAs from farm to school participation



**8%** of all schools had an edible school garden



Total of **213** edible school gardens

**66%** of all schools served local food

**90%** of SFAs participating in farm to school served local foods at least weekly



Local items that SFAs spent the most on



For more information on the Farm to School Census, visit: <https://farmtoschoolcensus.fns.usda.gov/>

# Ohio Farm to School Environment

In total, SFAs spent

**\$52 million**

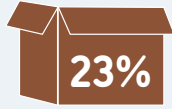
on all local food

**\$26 million**

on local fluid milk alone

Among SFAs doing farm to school, 15% of their spending was on local foods

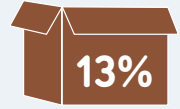
Challenges farm to school SFAs faced when procuring local foods



Local foods are more expensive



Limited availability of local foods



Local foods not available from primary vendors



How SFAs fund farm to school

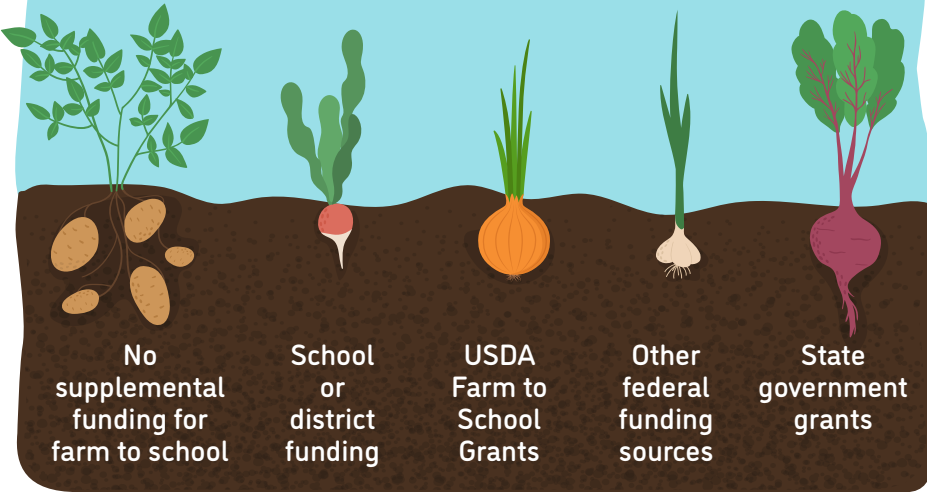
30%

13%

4%

4%

6%



No supplemental funding for farm to school

School or district funding

USDA Farm to School Grants

Other federal funding sources

State government grants

Farm to school SFAs with at least one full or part-time staff who used some of their time for farm to school

70%



Farm to school SFAs with at least one full-time staff dedicated to farm to school

32%



## Road Ahead

SFAs that don't participate in farm to school would like

48%



More funding for SFAs in general

39%



Training/technical assistance on procurement and delivery processes for local foods

36%



Targeted funding to improve kitchen capacity