

New Jersey findings from the

Farm to School Activities and Outcomes

Farm to school participation in New Jersey

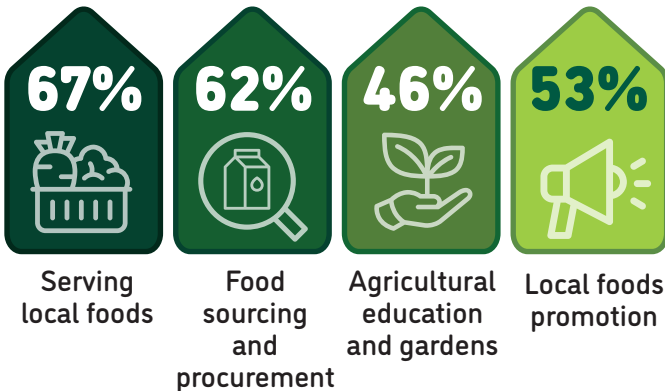
New Jersey **79%** of SFAs did at least one farm to school activity

Nationally **74%**

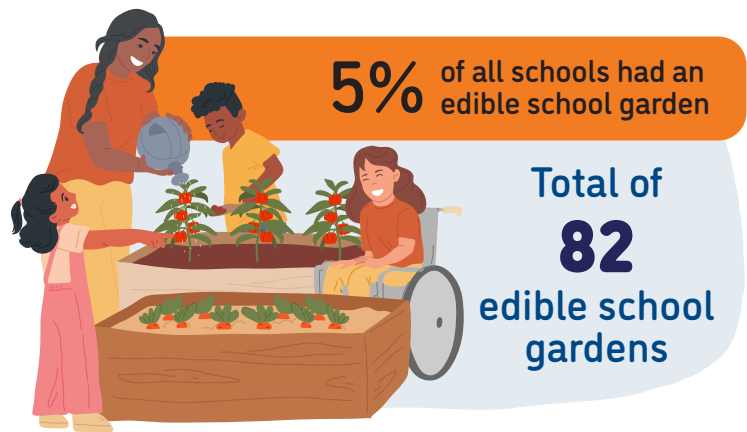
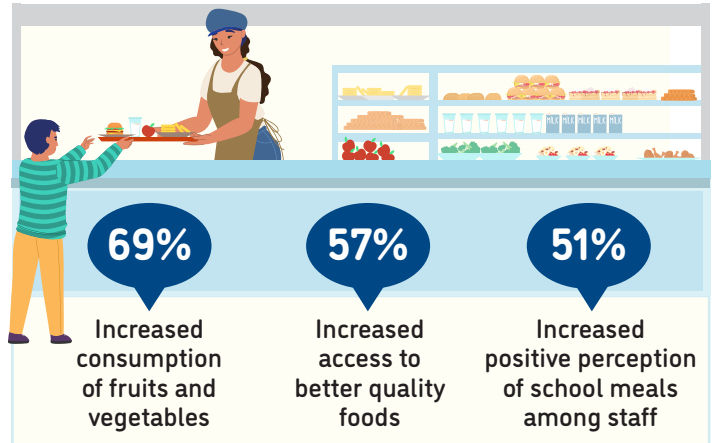
These SFAs included **1,259** schools and **658,832** students



Farm to school activity participation among SFAs



Positive outcomes of SFAs from farm to school participation



66% of all schools served local food

72% of SFAs participating in farm to school served local foods at least weekly



Local items that SFAs spent the most on



For more information on the Farm to School Census, visit: <https://farmtoschoolcensus.fns.usda.gov/>

New Jersey Farm to School Environment

In total, SFAs spent

\$29 million
on all local food

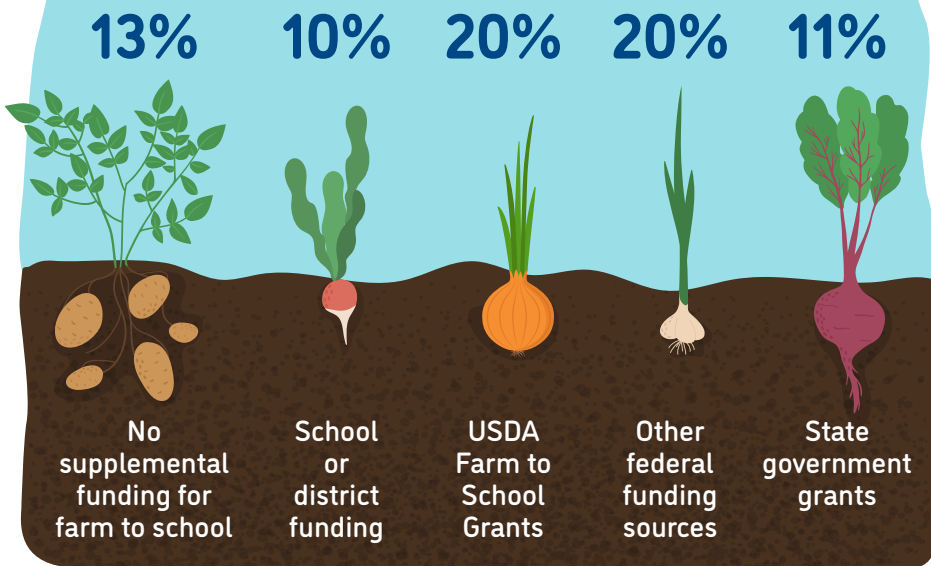
\$11 million
on local fluid milk alone

Among SFAs doing farm to school, 15% of their spending was on local foods

Challenges farm to school SFAs faced when procuring local foods



How SFAs fund farm to school



Farm to school SFAs with at least one full or part-time staff who used some of their time for farm to school



Farm to school SFAs with at least one full-time staff dedicated to farm to school



Road Ahead

SFAs that don't participate in farm to school would like

24%



More funding for SFAs in general

16%



More support from teachers and administrators

13%



Training/technical assistance on finding local foods