

Nevada findings from the

Farm to School Activities and Outcomes

Farm to school participation in Nevada

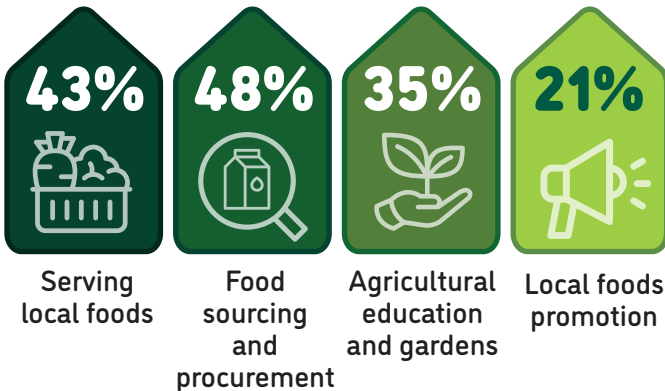
Nevada **69%** of SFAs did at least one farm to school activity

Nationally **74%**

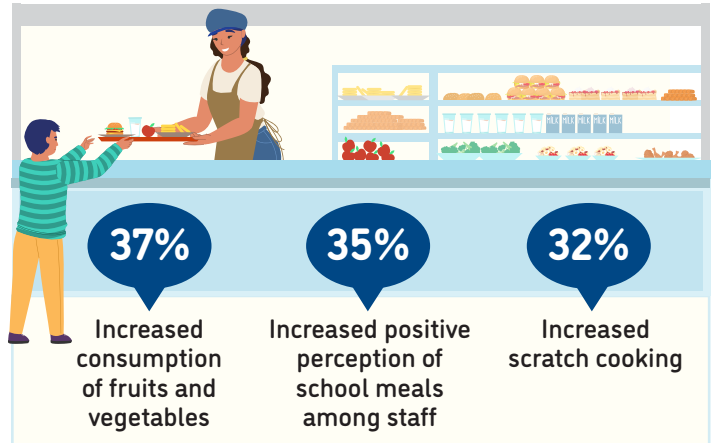
These SFAs included **562** schools and **110,391** students



Farm to school activity participation among SFAs



Positive outcomes of SFAs from farm to school participation



1% of all schools had an edible school garden



Total of **7** edible school gardens

71% of all schools served local food

88% of SFAs participating in farm to school served local foods at least weekly



Local items that SFAs spent the most on



For more information on the Farm to School Census, visit: <https://farmtoschoolcensus.fns.usda.gov/>

Nevada Farm to School Environment

In total, SFAs spent

\$4 million

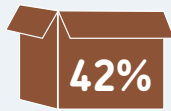
on all local food

\$3 million

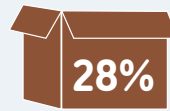
on local fluid milk alone

Among SFAs doing farm to school, 11% of their spending was on local foods

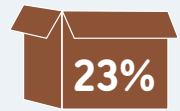
Challenges farm to school SFAs faced when procuring local foods



Limited availability of local foods



Difficult to find local vendors



Limited availability of pre-processed local foods



How SFAs fund farm to school

17%

23%

5%

5%

0%



Farm to school SFAs with at least one full or part-time staff who used some of their time for farm to school

63%



Farm to school SFAs with at least one full-time staff dedicated to farm to school

28%



Road Ahead

SFAs that don't participate in farm to school would like

67%



More funding for SFAs in general

67%



Targeted funding for local food procurement

67%



Targeted funding to improve kitchen capacity