

Nebraska findings from the

Farm to School Activities and Outcomes

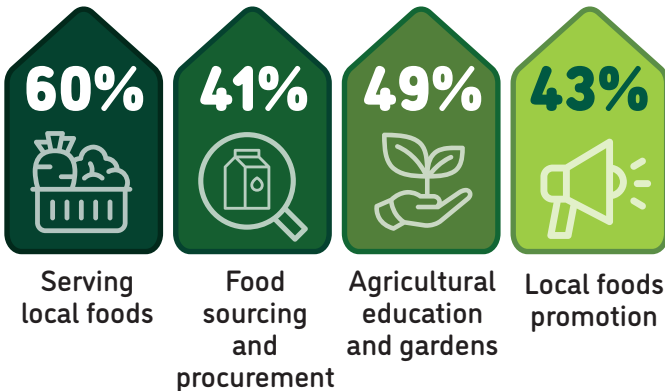
Farm to school participation in Nebraska

Nebraska **71%** of SFAs **74%** Nationally did at least one farm to school activity

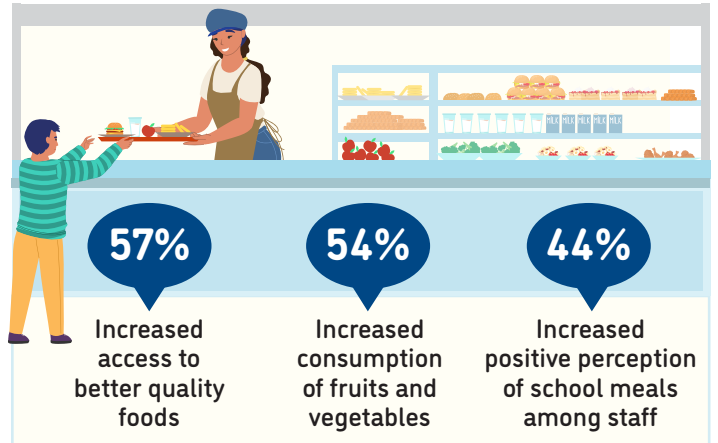
These SFAs included **570** schools and **233,472** students



Farm to school activity participation among SFAs



Positive outcomes of SFAs from farm to school participation



10% of all schools had an edible school garden



Total of **73** edible school gardens

60% of all schools served local food

71% of SFAs participating in farm to school served local foods at least weekly



Local items that SFAs spent the most on



For more information on the Farm to School Census, visit: <https://farmtoschoolcensus.fns.usda.gov/>

Nebraska Farm to School Environment

In total, SFAs spent

\$9 million

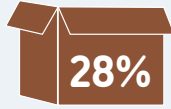
on all local food

\$6 million

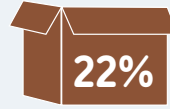
on local fluid milk alone

Among SFAs doing farm to school, 12% of their spending was on local foods

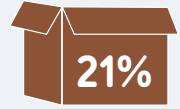
Challenges farm to school SFAs faced when procuring local foods



Limited availability of local foods



Local foods are more expensive



Difficult to find local vendors



How SFAs fund farm to school

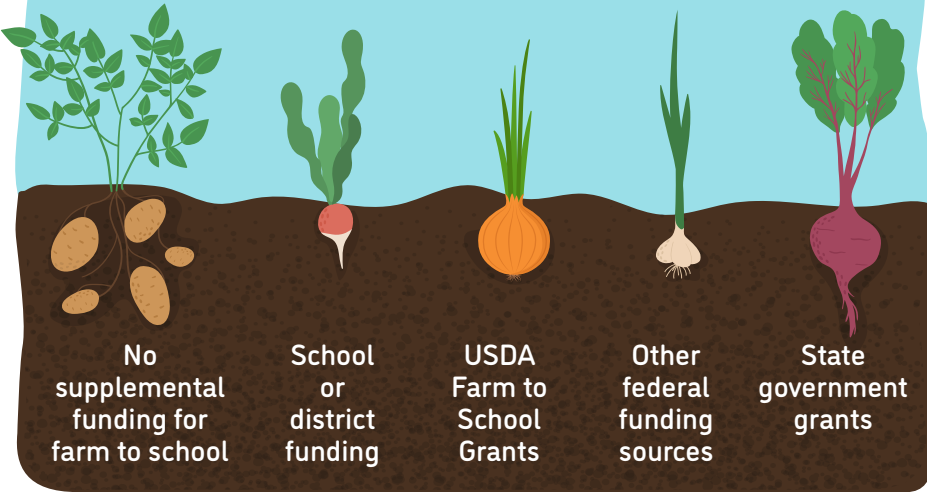
20%

19%

19%

13%

9%



Farm to school SFAs with at least one full or part-time staff who used some of their time for farm to school

77%



Farm to school SFAs with at least one full-time staff dedicated to farm to school

38%



Road Ahead

SFAs that don't participate in farm to school would like

35%



Training/technical assistance on finding local foods

35%



Training/technical assistance on paying for local foods or farm to school activities

35%



Training/technical assistance on procurement and delivery processes for local foods