

# Missouri findings from the

## Farm to School Activities and Outcomes

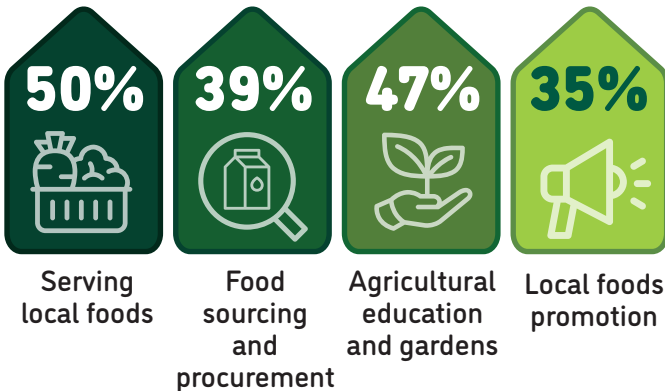
### Farm to school participation in Missouri

Missouri **67%** of SFAs **74%** Nationally did at least one farm to school activity

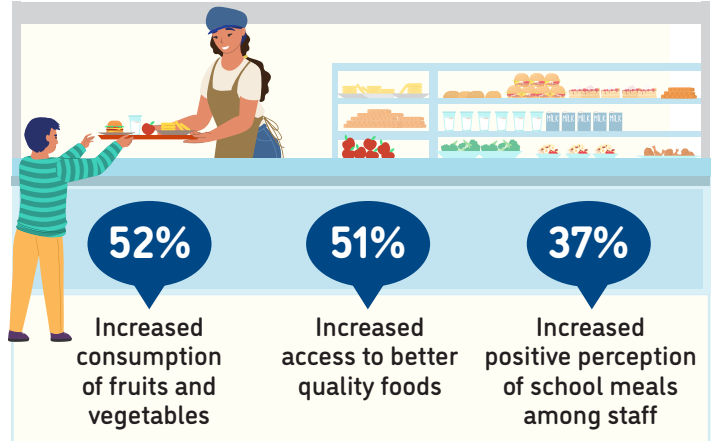
These SFAs included **960** schools and **406,077** students



### Farm to school activity participation among SFAs



### Positive outcomes of SFAs from farm to school participation



**8%** of all schools had an edible school garden



Total of **101** edible school gardens

**59%** of all schools served local food

**81%** of SFAs participating in farm to school served local foods at least weekly



### Local items that SFAs spent the most on



For more information on the Farm to School Census, visit: <https://farmtoschoolcensus.fns.usda.gov/>

# Missouri Farm to School Environment

In total, SFAs spent

**\$23 million**

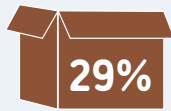
on all local food

**\$15 million**

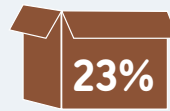
on local fluid milk alone

Among SFAs doing farm to school, 14% of their spending was on local foods

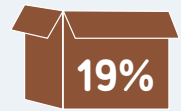
Challenges farm to school SFAs faced when procuring local foods



Limited availability of local foods



Local foods are more expensive



Delivery challenges



How SFAs fund farm to school

21%

20%

8%

6%

7%



No supplemental funding for farm to school

School or district funding

USDA Farm to School Grants

Other federal funding sources

State government grants

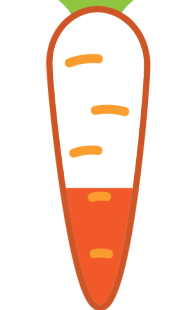
Farm to school SFAs with at least one full or part-time staff who used some of their time for farm to school

75%



Farm to school SFAs with at least one full-time staff dedicated to farm to school

40%



## Road Ahead

SFAs that don't participate in farm to school would like

39%



Training/technical assistance on finding local foods

32%



More funding for SFAs in general

32%



Training/technical assistance on procurement and delivery processes for local foods