

# Mississippi findings from the

## Farm to School Activities and Outcomes

### Farm to school participation in Mississippi

Mississippi **64%** of SFAs did at least one farm to school activity

Nationally **74%**

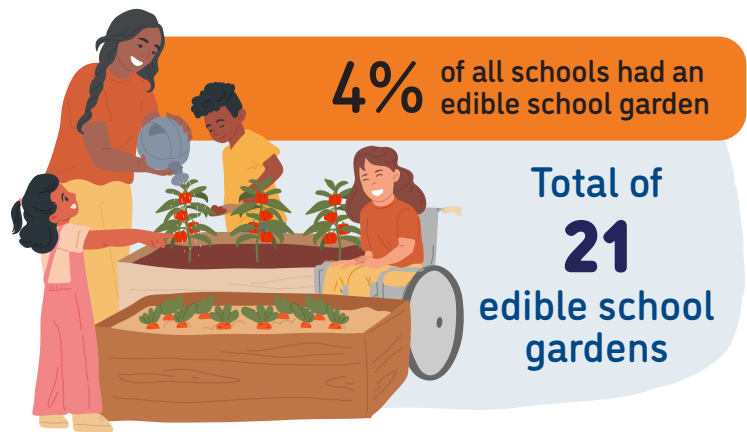
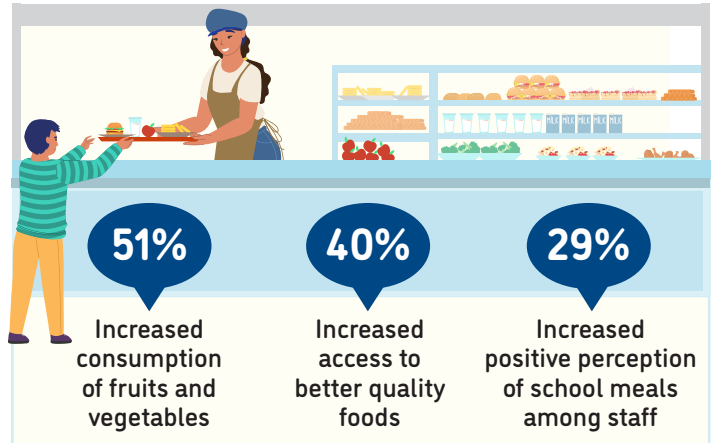
These SFAs included **364** schools and **180,468** students



### Farm to school activity participation among SFAs



### Positive outcomes of SFAs from farm to school participation

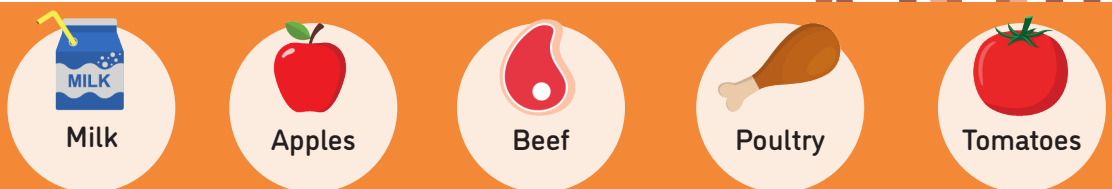


**48%** of all schools served local food

**59%** of SFAs participating in farm to school served local foods at least weekly



### Local items that SFAs spent the most on



For more information on the Farm to School Census, visit: <https://farmtoschoolcensus.fns.usda.gov/>

# Mississippi Farm to School Environment

In total, SFAs spent

**\$12 million**

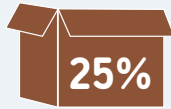
on all local food

**\$4 million**

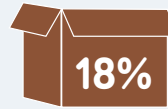
on local fluid milk alone

Among SFAs doing farm to school, 17% of their spending was on local foods

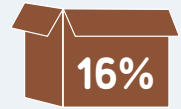
Challenges farm to school SFAs faced when procuring local foods



Limited availability of local foods



Difficult to find local vendors



Difficult to get local products that meet specifications



How SFAs fund farm to school

22%

17%

8%

7%

13%



Farm to school SFAs with at least one full or part-time staff who used some of their time for farm to school

65%



Farm to school SFAs with at least one full-time staff dedicated to farm to school

37%



## Road Ahead

SFAs that don't participate in farm to school would like

63%



Training/technical assistance on finding local foods

48%



More funding for SFAs in general

48%



Training/technical assistance on procurement and delivery processes for local foods