

Minnesota findings from the

Farm to School Activities and Outcomes

Farm to school participation in Minnesota

Minnesota **72%** of SFAs **Nationally 74%** did at least one farm to school activity

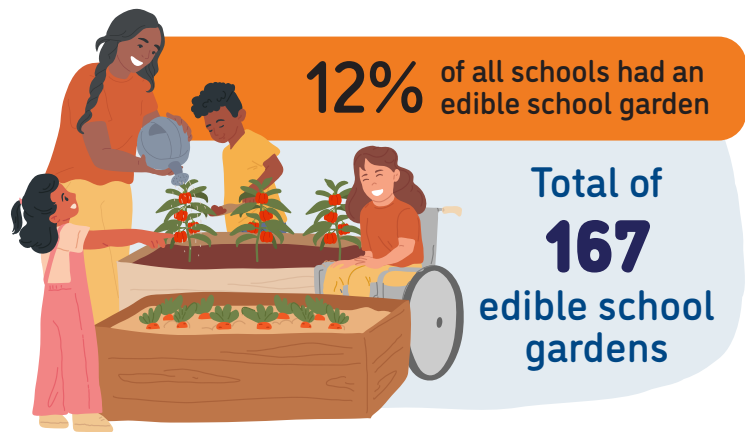
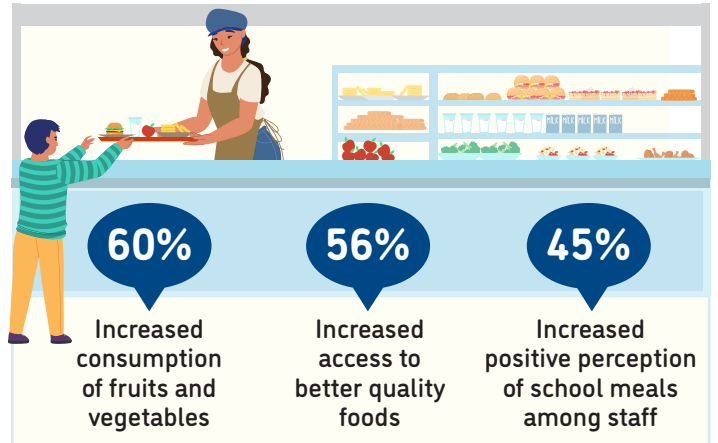
These SFAs included **1,141** schools and **580,866** students



Farm to school activity participation among SFAs



Positive outcomes of SFAs from farm to school participation

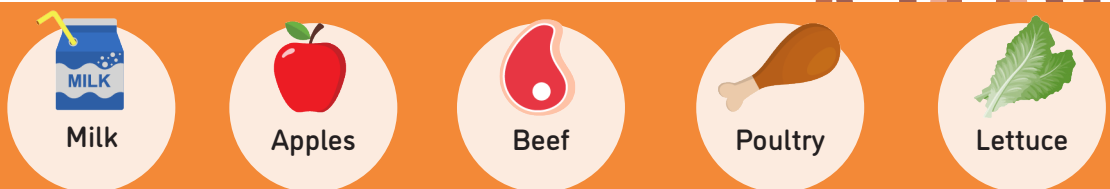


75% of all schools served local food

71% of SFAs participating in farm to school served local foods at least weekly



Local items that SFAs spent the most on



For more information on the Farm to School Census, visit: <https://farmtoschoolcensus.fns.usda.gov/>

Minnesota Farm to School Environment

In total, SFAs spent

\$22 million

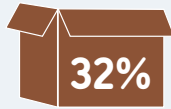
on all local food

\$12 million

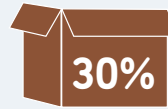
on local fluid milk alone

Among SFAs doing farm to school, 11% of their spending was on local foods

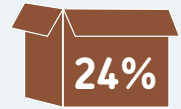
Challenges farm to school SFAs faced when procuring local foods



Limited availability of local foods



Local foods are more expensive



Lack of staff time to prepare local foods



How SFAs fund farm to school

24%

16%

24%

3%

12%



Farm to school SFAs with at least one full or part-time staff who used some of their time for farm to school

80%



Farm to school SFAs with at least one full-time staff dedicated to farm to school

34%



Road Ahead

SFAs that don't participate in farm to school would like

44%



More funding for SFAs in general

40%



Training/technical assistance on finding local foods

36%



Training/technical assistance on procurement and delivery processes for local foods