

Massachusetts findings from the

Farm to School Activities and Outcomes

Farm to school participation in Massachusetts

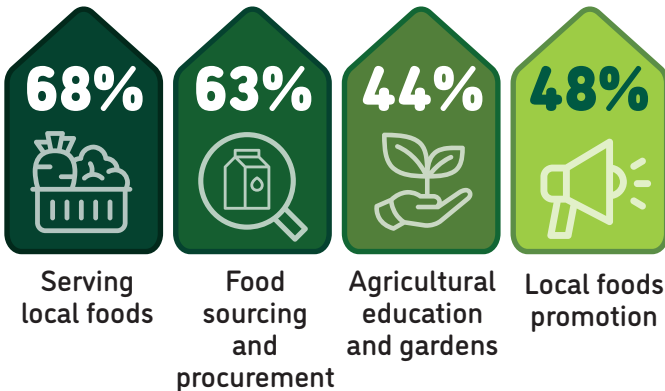
Massachusetts **78%** of SFAs did at least one farm to school activity

Nationally **74%**

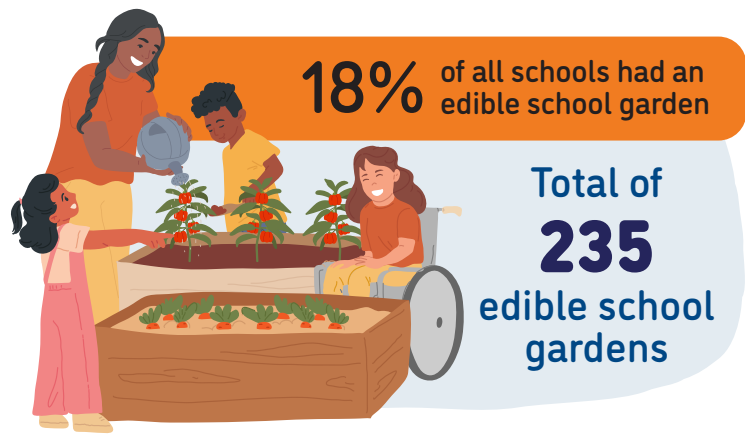
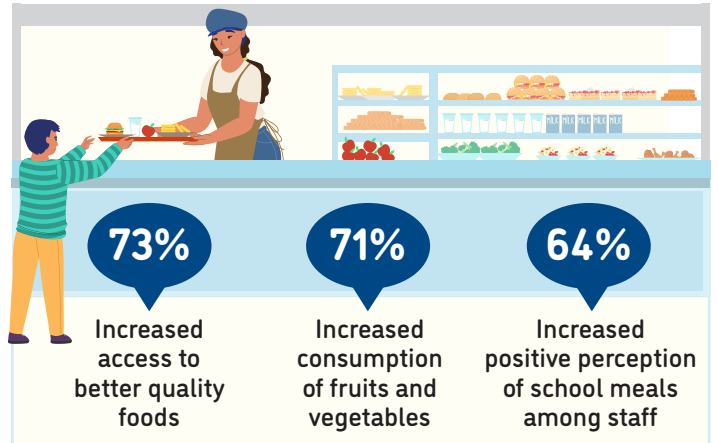
These SFAs included **1,140** schools and **526,041** students



Farm to school activity participation among SFAs



Positive outcomes of SFAs from farm to school participation



76% of all schools served local food

78% of SFAs participating in farm to school served local foods at least weekly



Local items that SFAs spent the most on



For more information on the Farm to School Census, visit: <https://farmtoschoolcensus.fns.usda.gov/>

Massachusetts Farm to School Environment

In total, SFAs spent

\$23 million

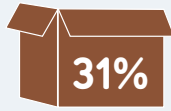
on all local food

\$14 million

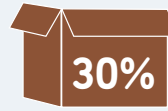
on local fluid milk alone

Among SFAs doing farm to school, 12% of their spending was on local foods

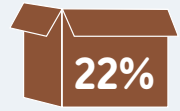
Challenges farm to school SFAs faced when procuring local foods



Limited availability of local foods



Local foods are more expensive



Delivery challenges



How SFAs fund farm to school

25%

14%

26%

16%

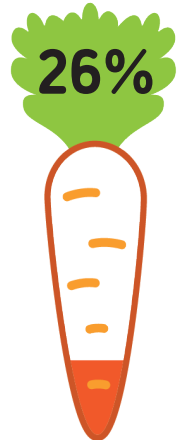
16%



Farm to school SFAs with at least one full or part-time staff who used some of their time for farm to school



Farm to school SFAs with at least one full-time staff dedicated to farm to school



Road Ahead

SFAs that don't participate in farm to school would like

63%



Changes to procurement policies

52%



Targeted funding to improve kitchen capacity

48%



More support from teachers and administrators