

Maryland findings from the

Farm to School Activities and Outcomes

Farm to school participation in Maryland

Maryland **85%** of SFAs did at least one farm to school activity

Nationally **74%**

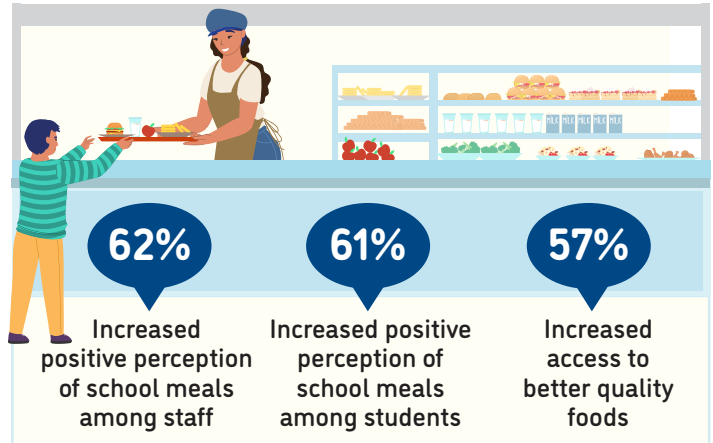
These SFAs included **971** schools and **585,877** students



Farm to school activity participation among SFAs



Positive outcomes of SFAs from farm to school participation



62% of all schools served local food

82% of SFAs participating in farm to school served local foods at least weekly



Local items that SFAs spent the most on



For more information on the Farm to School Census, visit: <https://farmtoschoolcensus.fns.usda.gov/>

Maryland Farm to School Environment

In total, SFAs spent

\$22 million

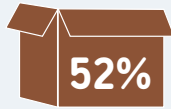
on all local food

\$16 million

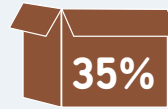
on local fluid milk alone

Among SFAs doing farm to school, 15% of their spending was on local foods

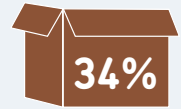
Challenges farm to school SFAs faced when procuring local foods



Limited availability of local foods



Limited availability of pre-processed local foods



Local foods are more expensive



How SFAs fund farm to school

21%

29%

15%

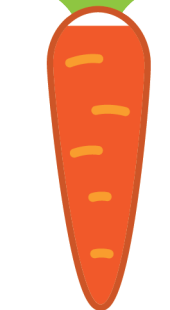
13%

15%



Farm to school SFAs with at least one full or part-time staff who used some of their time for farm to school

96%



Farm to school SFAs with at least one full-time staff dedicated to farm to school

32%



Road Ahead

SFAs that don't participate in farm to school would like

100%



Training/technical assistance on finding local foods

100%



Training/technical assistance on procurement and delivery processes for local foods

100%



Training/technical assistance on paying for local foods or farm to school activities