

Louisiana findings from the

Farm to School Activities and Outcomes

Farm to school participation in Louisiana

Louisiana **73%** of SFAs did at least one farm to school activity

Nationally **74%**

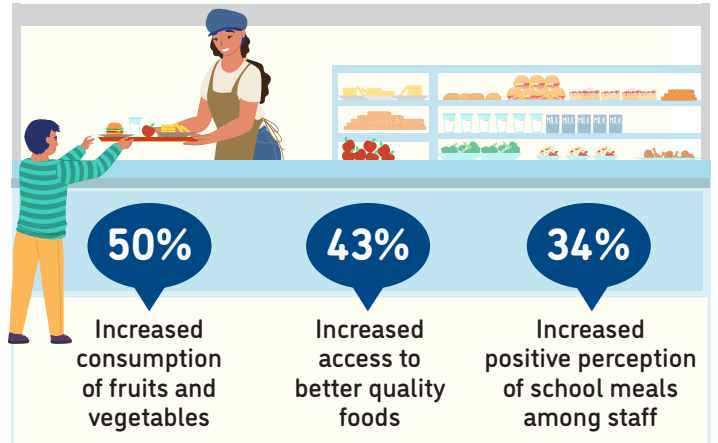
These SFAs included **1,089** schools and **369,685** students



Farm to school activity participation among SFAs



Positive outcomes of SFAs from farm to school participation



6% of all schools had an edible school garden



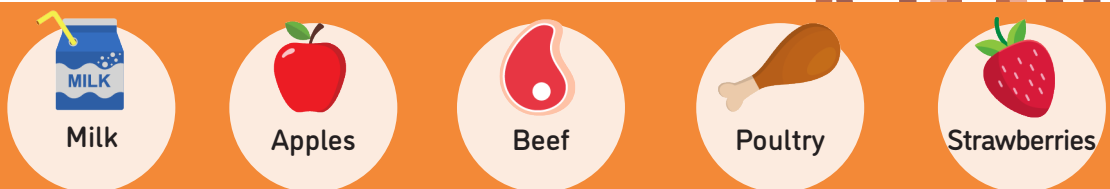
Total of **71** edible school gardens

58% of all schools served local food

85% of SFAs participating in farm to school served local foods at least weekly



Local items that SFAs spent the most on



For more information on the Farm to School Census, visit: <https://farmtoschoolcensus.fns.usda.gov/>

Louisiana Farm to School Environment

In total, SFAs spent

\$46 million
on all local food

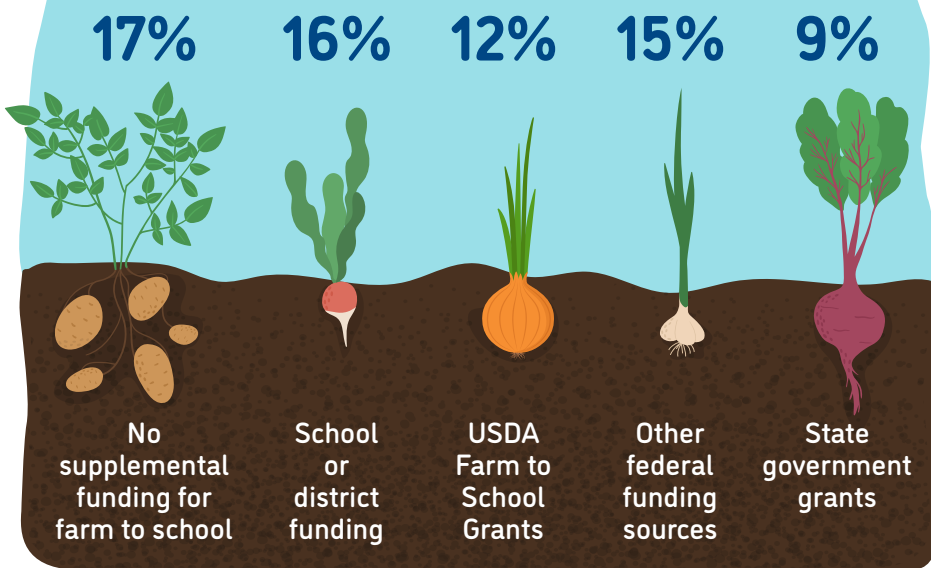
\$24 million
on local fluid milk alone

Among SFAs doing farm to school, 18% of their spending was on local foods

Challenges farm to school SFAs faced when procuring local foods



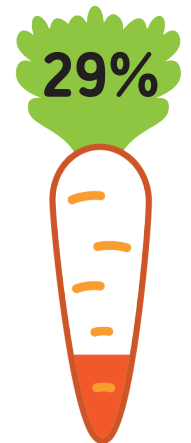
How SFAs fund farm to school



Farm to school SFAs with at least one full or part-time staff who used some of their time for farm to school



Farm to school SFAs with at least one full-time staff dedicated to farm to school



Road Ahead

SFAs that don't participate in farm to school would like

80%



More funding for SFAs in general

40%



Targeted funding for farm to school educational activities

40%



Targeted funding for local food procurement