

Illinois findings from the

Farm to School Activities and Outcomes

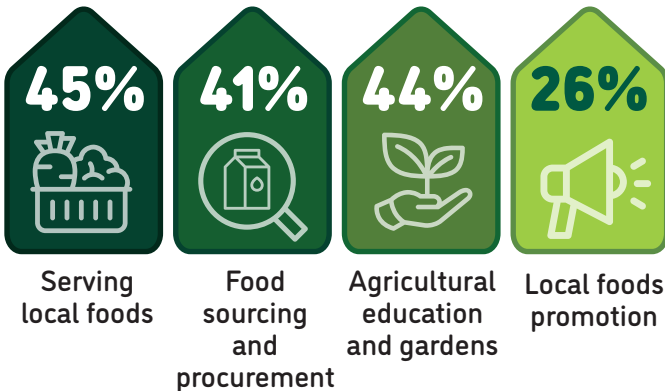
Farm to school participation in Illinois

Illinois **64%** of SFAs **74%** Nationally did at least one farm to school activity

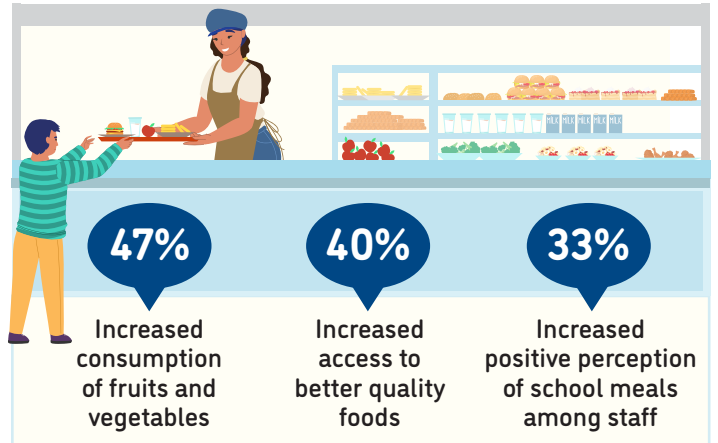
These SFAs included **2,006** schools and **865,424** students



Farm to school activity participation among SFAs



Positive outcomes of SFAs from farm to school participation



12% of all schools had an edible school garden



Total of **333** edible school gardens

61% of all schools served local food

87% of SFAs participating in farm to school served local foods at least weekly



Local items that SFAs spent the most on



For more information on the Farm to School Census, visit: <https://farmtoschoolcensus.fns.usda.gov/>

Illinois Farm to School Environment

In total, SFAs spent

\$51 million

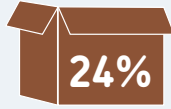
on all local food

\$27 million

on local fluid milk alone

Among SFAs doing farm to school, 19% of their spending was on local foods

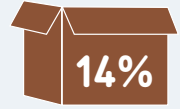
Challenges farm to school SFAs faced when procuring local foods



Limited availability of local foods



Local foods are more expensive



Difficult to find local vendors



How SFAs fund farm to school

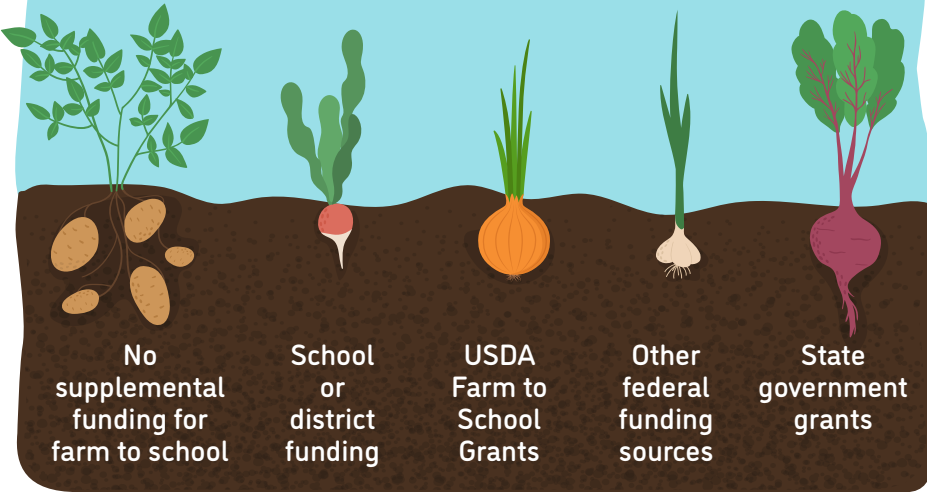
19%

21%

9%

12%

13%



Farm to school SFAs with at least one full or part-time staff who used some of their time for farm to school

70%



Farm to school SFAs with at least one full-time staff dedicated to farm to school

34%



Road Ahead

SFAs that don't participate in farm to school would like

41%



More funding for SFAs in general

39%



Training/technical assistance on finding local foods

30%



More support from teachers and administrators