

Guam findings from the

Farm to School Activities and Outcomes

Farm to school participation in Guam

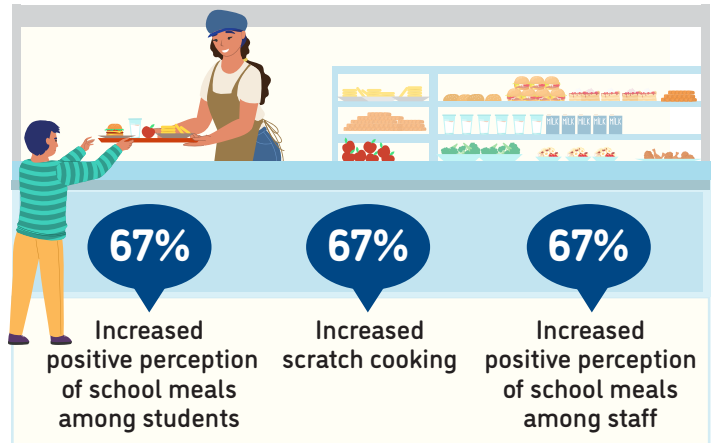
Guam **100%** of SFAs did at least one farm to school activity

Nationally **74%**

These SFAs included **46** schools and **28,945** students



Positive outcomes of SFAs from farm to school participation



Farm to school activity participation among SFAs



100% of all schools served local food

100% of SFAs participating in farm to school served local foods at least weekly



Local items that SFAs spent the most on



For more information on the Farm to School Census, visit: <https://farmtoschoolcensus.fns.usda.gov/>

Guam Farm to School Environment

In total, SFAs spent

\$340 thousand

on all local food

\$0

on local fluid milk alone

Among SFAs doing farm to school, 15% of their spending was on local foods

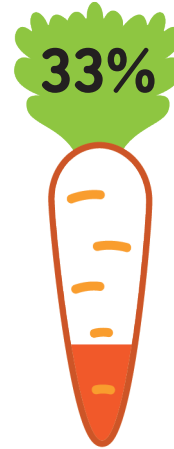
Farm to school SFAs with at least one full or part-time staff who used some of their time for farm to school

67%



Farm to school SFAs with at least one full-time staff dedicated to farm to school

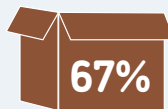
33%



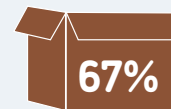
Challenges farm to school SFAs faced when procuring local foods



Limited availability of local foods



Difficult to get local products that meet specifications



Local producers unable to meet food safety requirements

