

Connecticut findings from the

Farm to School Activities and Outcomes

Farm to school participation in Connecticut

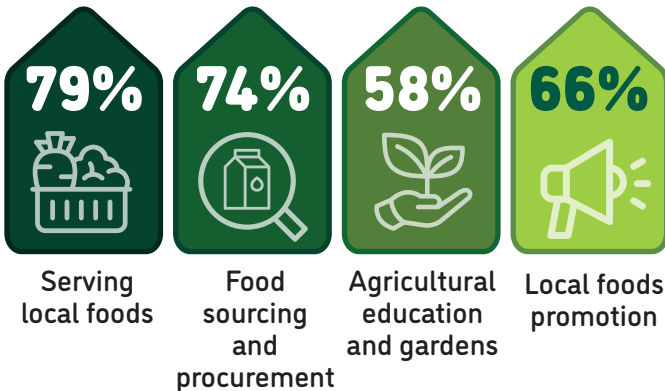
Connecticut **84%** of SFAs did at least one farm to school activity

Nationally **74%**

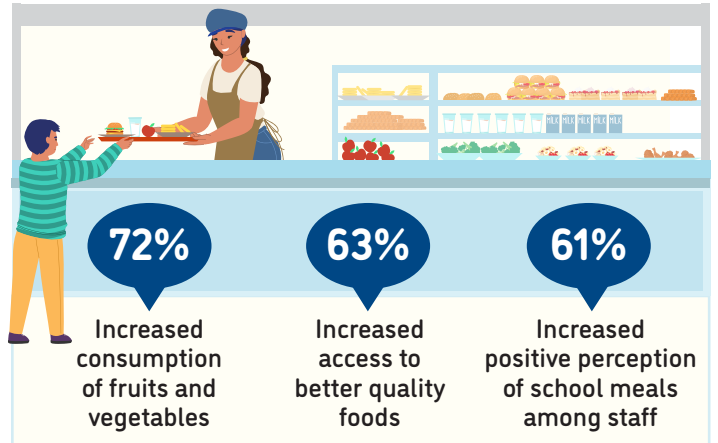
These SFAs included **639** schools and **304,617** students



Farm to school activity participation among SFAs



Positive outcomes of SFAs from farm to school participation



8% of all schools had an edible school garden



Total of **58** edible school gardens

77% of all schools served local food

78% of SFAs participating in farm to school served local foods at least weekly



Local items that SFAs spent the most on



For more information on the Farm to School Census, visit: <https://farmtoschoolcensus.fns.usda.gov/>

Connecticut Farm to School Environment

In total, SFAs spent

\$11 million

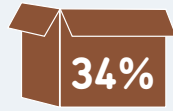
on all local food

\$6 million

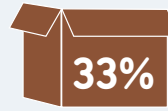
on local fluid milk alone

Among SFAs doing farm to school, 13% of their spending was on local foods

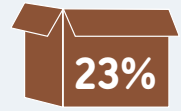
Challenges farm to school SFAs faced when procuring local foods



Limited availability of local foods



Local foods are more expensive



Local foods not available from primary vendors



How SFAs fund farm to school

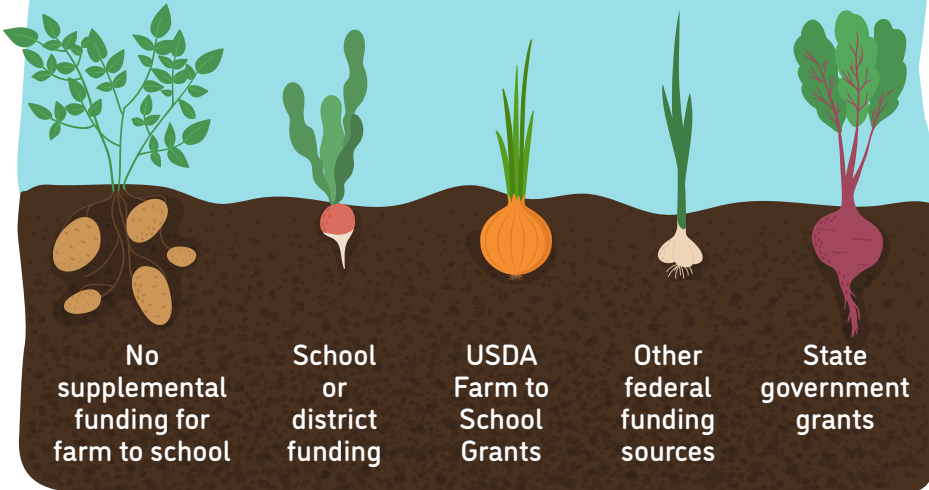
26%

14%

16%

15%

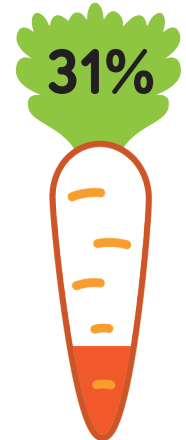
22%



Farm to school SFAs with at least one full or part-time staff who used some of their time for farm to school



Farm to school SFAs with at least one full-time staff dedicated to farm to school



Road Ahead

SFAs that don't participate in farm to school would like

48%



Changes to procurement policies

35%



Targeted funding for local food procurement

17%



More funding for SFAs in general