

Colorado findings from the

Farm to School Activities and Outcomes

Farm to school participation in Colorado

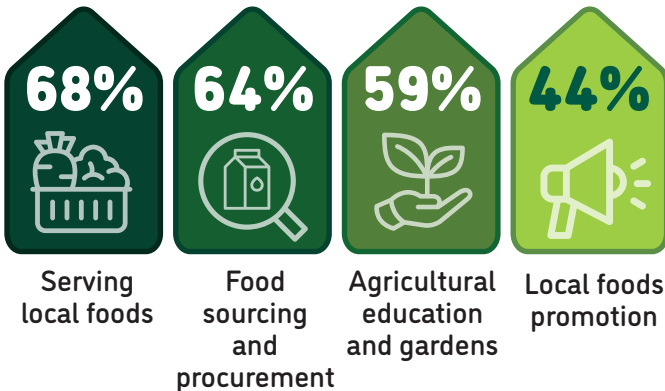
Colorado **79%** of SFAs did at least one farm to school activity

Nationally **74%**

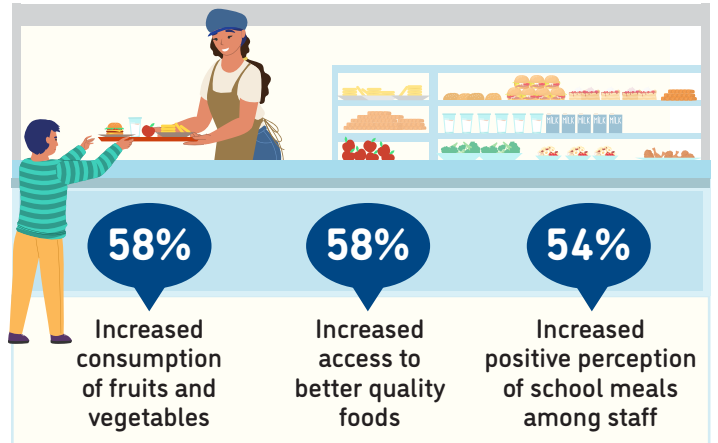
These SFAs included **1,519** schools and **751,302** students



Farm to school activity participation among SFAs



Positive outcomes of SFAs from farm to school participation



10% of all schools had an edible school garden



Total of **165** edible school gardens

86% of all schools served local food

60% of SFAs participating in farm to school served local foods at least weekly



Local items that SFAs spent the most on



For more information on the Farm to School Census, visit: <https://farmtoschoolcensus.fns.usda.gov/>

Colorado Farm to School Environment

In total, SFAs spent

\$17 million

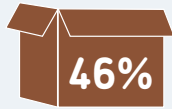
on all local food

\$13 million

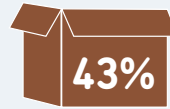
on local fluid milk alone

Among SFAs doing farm to school, 11% of their spending was on local foods

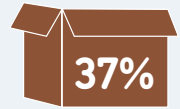
Challenges farm to school SFAs faced when procuring local foods



Local foods are more expensive



Limited availability of local foods



Delivery challenges



How SFAs fund farm to school

24%

22%

15%

26%

17%



No supplemental funding for farm to school

School or district funding

USDA Farm to School Grants

Other federal funding sources

State government grants

Farm to school SFAs with at least one full or part-time staff who used some of their time for farm to school

76%



Farm to school SFAs with at least one full-time staff dedicated to farm to school

39%



Road Ahead

SFAs that don't participate in farm to school would like

45%



Targeted funding for local food procurement

43%



Training/technical assistance on finding local foods

43%



Training/technical assistance on procurement and delivery processes for local foods