

# California findings from the

## Farm to School Activities and Outcomes

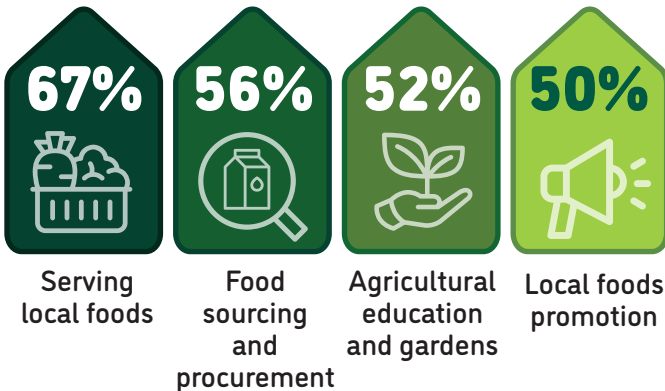
### Farm to school participation in California

California **77%** of SFAs **Nationally 74%** did at least one farm to school activity

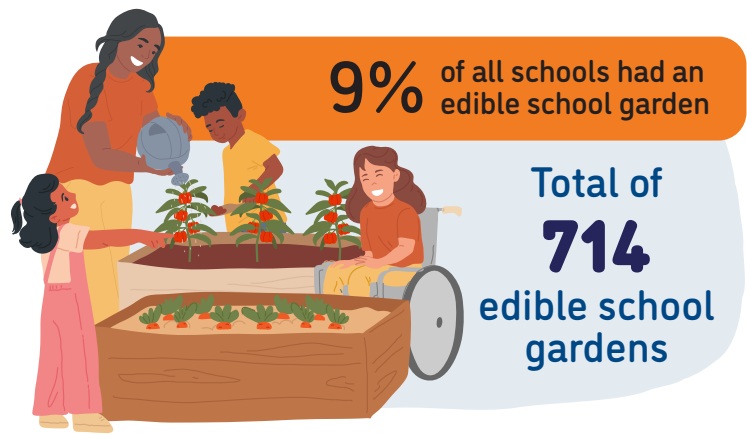
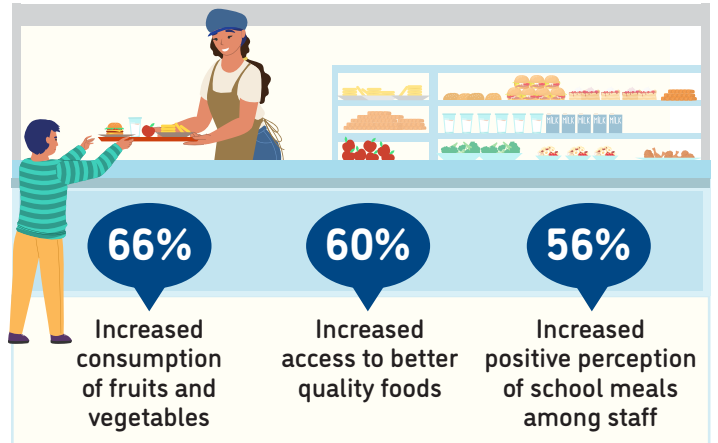
These SFAs included **7,071** schools and **3,763,513** students



### Farm to school activity participation among SFAs



### Positive outcomes of SFAs from farm to school participation



**79%** of all schools served local food

**91%** of SFAs participating in farm to school served local foods at least weekly



### Local items that SFAs spent the most on



For more information on the Farm to School Census, visit: <https://farmtoschoolcensus.fns.usda.gov/>

# California Farm to School Environment

In total, SFAs spent

**\$320 million**

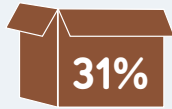
on all local food

**\$145 million**

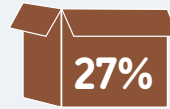
on local fluid milk alone

Among SFAs doing farm to school, 22% of their spending was on local foods

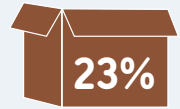
Challenges farm to school SFAs faced when procuring local foods



Local foods are more expensive



Limited availability of local foods



Delivery challenges



How SFAs fund farm to school

18%

22%

12%

23%

19%



No supplemental funding for farm to school

School or district funding

USDA Farm to School Grants

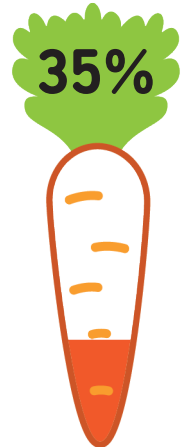
Other federal funding sources

State government grants

Farm to school SFAs with at least one full or part-time staff who used some of their time for farm to school



Farm to school SFAs with at least one full-time staff dedicated to farm to school



## Road Ahead

SFAs that don't participate in farm to school would like

**53%**



More funding for SFAs in general

**41%**



Training/technical assistance on procurement and delivery processes for local foods

**35%**



Targeted funding for farm to school educational activities