

Arizona findings from the

Farm to School Activities and Outcomes

Farm to school participation in Arizona

Arizona **64%** of SFAs did at least one farm to school activity

Nationally **74%**

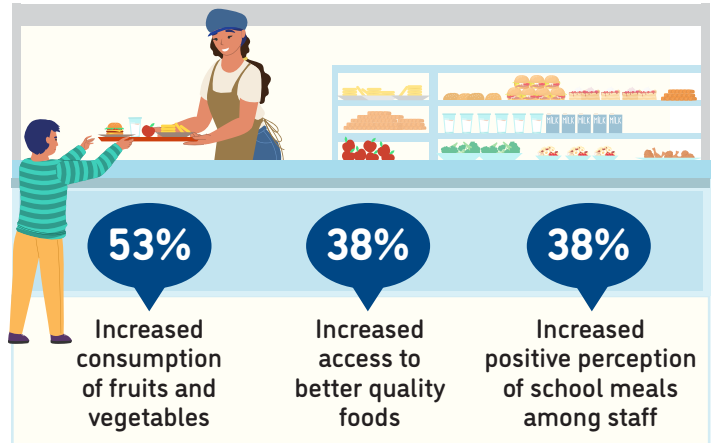
These SFAs included **1,048** schools and **661,137** students



Farm to school activity participation among SFAs



Positive outcomes of SFAs from farm to school participation



11% of all schools had an edible school garden



Total of **133** edible school gardens

70% of all schools served local food

88% of SFAs participating in farm to school served local foods at least weekly



Local items that SFAs spent the most on



For more information on the Farm to School Census, visit: <https://farmtoschoolcensus.fns.usda.gov/>

Arizona Farm to School Environment

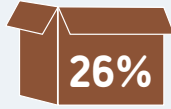
In total, SFAs spent

\$43 million
on all local food

\$19 million
on local fluid milk alone

Among SFAs doing farm to school, 21% of their spending was on local foods

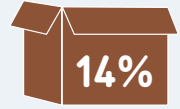
Challenges farm to school SFAs faced when procuring local foods



Limited availability of local foods



Local foods are more expensive



Local foods not available from primary vendors



How SFAs fund farm to school

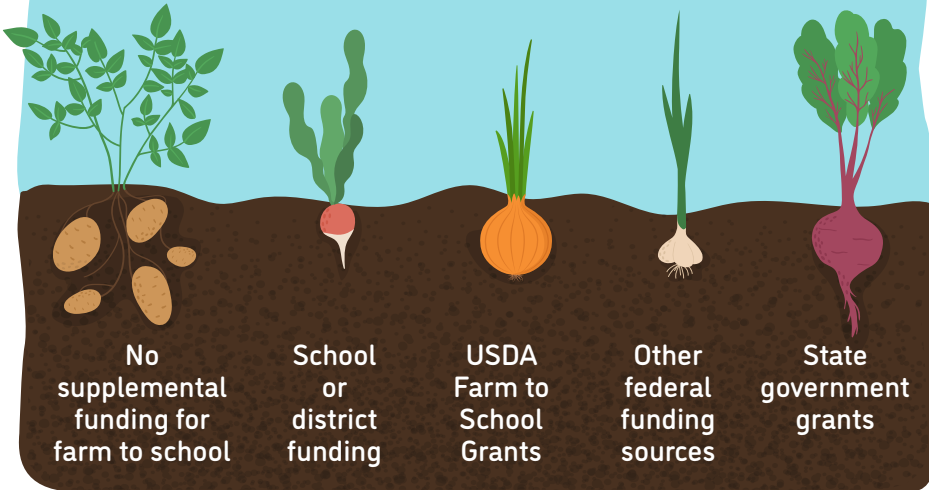
22%

12%

6%

2%

13%



Farm to school SFAs with at least one full or part-time staff who used some of their time for farm to school

58%



Farm to school SFAs with at least one full-time staff dedicated to farm to school

31%



Road Ahead

SFAs that don't participate in farm to school would like

51%



Training/technical assistance on paying for local foods or farm to school activities

48%



Training/technical assistance on procurement and delivery processes for local foods

36%



Targeted funding for farm to school educational activities