

Alaska findings from the

Farm to School Activities and Outcomes

Farm to school participation in Alaska

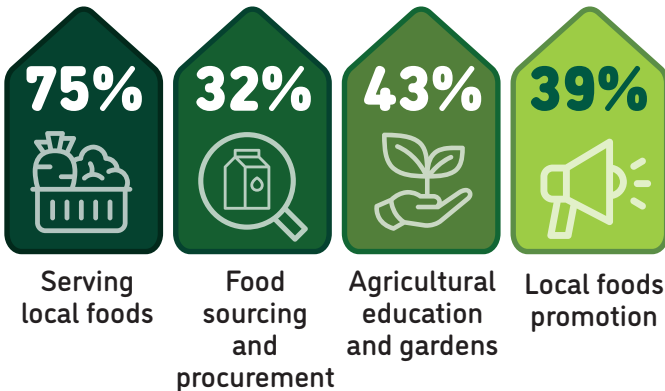
Alaska **75%** of SFAs did at least one farm to school activity

Nationally **74%**

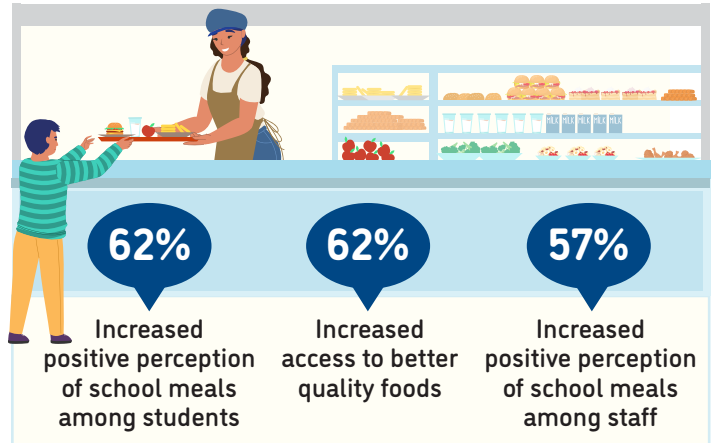
These SFAs included **147** schools and **23,405** students



Farm to school activity participation among SFAs



Positive outcomes of SFAs from farm to school participation



11% of all schools had an edible school garden



Total of **19** edible school gardens

63% of all schools served local food

33% of SFAs participating in farm to school served local foods at least weekly



Local items that SFAs spent the most on



For more information on the Farm to School Census, visit: <https://farmtoschoolcensus.fns.usda.gov/>

Alaska Farm to School Environment

In total, SFAs spent

\$475 thousand

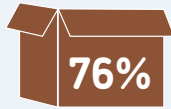
on all local food

\$9 thousand

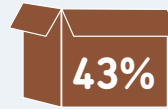
on local fluid milk alone

Among SFAs doing farm to school, 3% of their spending was on local foods

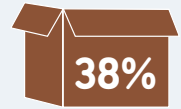
Challenges farm to school SFAs faced when procuring local foods



Limited availability of local foods



Limited availability of pre-processed local foods



Difficult to find local vendors



How SFAs fund farm to school

10%

38%

24%

43%

19%



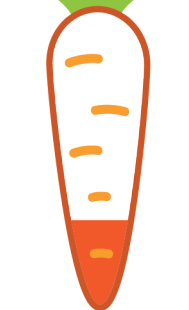
Farm to school SFAs with at least one full or part-time staff who used some of their time for farm to school

52%



Farm to school SFAs with at least one full-time staff dedicated to farm to school

29%



Road Ahead

SFAs that don't participate in farm to school would like

100%



More funding for SFAs in general

100%



Training/technical assistance on finding local foods

100%



Training/technical assistance on procurement and delivery processes for local foods