

North Carolina findings from the

Farm to School Activities and Outcomes

Farm to school participation in North Carolina

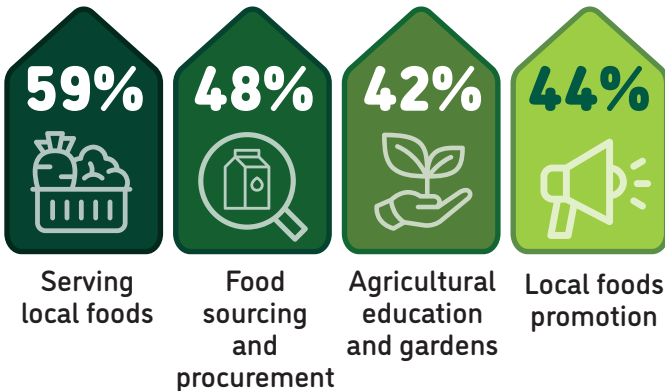
North Carolina **67%** of SFAs did at least one farm to school activity

Nationally **74%**

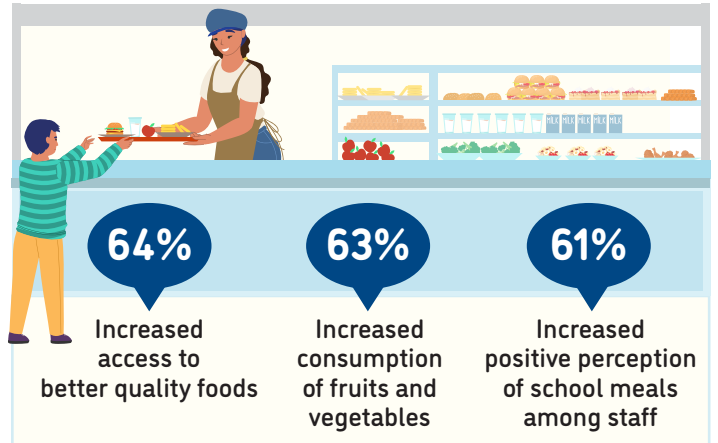
These SFAs included **2,232** schools and **1,278,587** students



Farm to school activity participation among SFAs



Positive outcomes of SFAs from farm to school participation



2% of all schools had an edible school garden



Total of **52** edible school gardens

78% of all schools served local food

73% of SFAs participating in farm to school served local foods at least weekly



Local items that SFAs spent the most on



For more information on the Farm to School Census, visit: <https://farmtoschoolcensus.fns.usda.gov/>

North Carolina Farm to School Environment

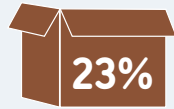
In total, SFAs spent

\$27 million
on all local food

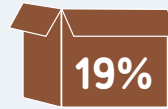
\$15 million
on local fluid milk alone

Among SFAs doing farm to school, 10% of their spending was on local foods

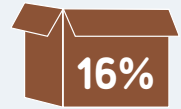
Challenges farm to school SFAs faced when procuring local foods



Local foods are more expensive



Limited availability of local foods



Lack of staff time to prepare local foods



How SFAs fund farm to school

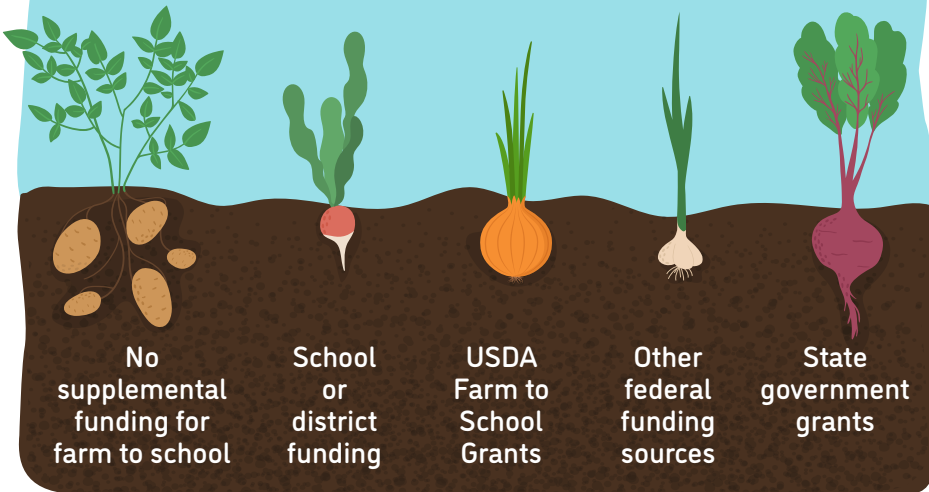
23%

18%

25%

29%

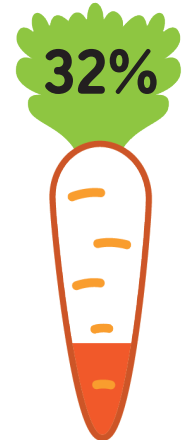
13%



Farm to school SFAs with at least one full or part-time staff who used some of their time for farm to school



Farm to school SFAs with at least one full-time staff dedicated to farm to school



Road Ahead

SFAs that don't participate in farm to school would like

54%



Training/technical assistance on paying for local foods or farm to school activities

28%



Training/technical assistance on procurement and delivery processes for local foods

18%



Targeted funding for local food procurement